

PROJECT:

Bantry Mill Culvert Upgrade Project

SCOPE

Archaeological Impact Assessment

CLIENT

Cork County Council

PREPARED BY

Julianna O'Donoghue and Ciara McCarthy

DATE

October 2024

Contents

List of Figures	i
List of Plates	i
Acknowledgements.....	ii
Summary	1
1 Introduction	2
1.1 General.....	2
1.2 Assessment Objectives.....	2
1.3 Conventions, Legislation and Guidelines	2
1.4 Location, Topography and Hydrology	3
1.5 Description of Proposed Works	5
2 Methodology.....	5
2.1 Desktop Study	5
2.2 Site Inspection.....	6
3 Results.....	6
3.1 Archaeological and Historical Background	6
3.2 Recorded Archaeological Monuments.....	8
3.3 Architectural Heritage.....	9
3.4 Cartographic Information	10
3.5 Previous Archaeological Investigations within the vicinity of the proposed development	13
4 Site Inspection.....	13
5 Impact of Proposed works	18
6 Recommendations	18
7 Bibliography	19
Documentary Sources	19
Other Sources	19
8 Appendices.....	20
Appendix 1: List of archaeological monuments (SMR) in vicinity of Bantry town.....	20

Appendix 2: Structures listed on the NIAH in the vicinity of proposed development..... 21

Appendix 3: List of sites on the RPS in the vicinity of the proposed works area 45

Appendix 4: List of previous excavations in the vicinity of the works area 47

List of Figures

Figure 1: Site location map.	4
Figure 2: Site Location map showing proposed works.	4
Figure 3: Extract from the National Monuments service Historic Environment Viewer showing archaeological monuments in proximity to the works area.	9
Figure 4: Extract from the National Monuments service Historic Environment Viewer showing NIAH sites in proximity to the works area.	10
Figure 5: Extract from 16th century ‘Map of area in County Cork and County Kerry, Ireland, around Bantry Bay.’ The National Archives MPF 1/94	11
Figure 6: Early 17th century map of Bantry (East Yorkshire Archives), published by Breen (2005).	12
Figure 7: Location of works in Bantry on first edition 6-inch OS Map (1845).	12
Figure 8: Location of works in Bantry on second edition 25-inch OS Map (1899)	13
Figure 9: Cross section showing proposed works and existing culvert.	15

List of Plates

Plate 1: Image of interior of culvert (MWP, 2018). Plate 2: Image of interior of culvert (MWP, 2018).	15
Plate 3: View of Wolfe Tone Square, taken from south.	16
Plate 4: View of culvert inlet behind replica mill wheel on site of former mill.	16
Plate 5: View of Bridge street with Library in view, including NIAH 20834066 & 20834065 ,taken from west.	17
Plate 6: View of culvert visible from harbour, taken from south.	17

Acknowledgements

Mizen Archaeology would like to thank Cork County Council, in particular Brian Lawlor and Charlie McCarthy for their assistance throughout the project.

Summary

This report relays the results of an archaeological impact assessment (AIA) of the proposed replacement of a culvert in Bantry, Co. Cork.

The assessment found that there are no recorded archaeological monuments in the immediate vicinity of the proposed works area and no new archaeological sites were identified during the assessment. The likelihood of encountering in-situ unrecorded monuments during the construction phase is considered low.

The Bantry culvert system is a valuable cultural heritage asset. It reflects what was likely the earliest municipal investment in water infrastructures in the town, a measure that was expected to alleviate flooding and water-borne-diseases as well as promoting economic development. It is preserved to varying degrees and displays a range of styles in stone building techniques including segmental arches, semi-circular arches and lintel culverts.

The proposed upgrading works involve the installation of a pre-cast concrete culvert with internal dimensions of 5.2m in width and 1.5m in height along the Mill River culvert from the site of the former mill to the Bantry Harbour. It will result in the demolition of the majority of the Mill River stone culvert. The nature of the impact is classified as direct, negative and irreversible. A programme of archaeological monitoring is recommended.

1 Introduction

1.1 General

This report relays the results of an archaeological impact assessment (AIA) of the proposed replacement of a culvert in Bantry, Co. Cork. The AIA comprises a desk-based assessment and walk-over survey, carried out by Mizen Archaeology on behalf of Cork County Council.

An architectural heritage impact assessment (AHIA) has been prepared as a separate report by Southgate Associates.

1.2 Assessment Objectives

The objective of the AIA assessment is to:

- Ascertain the character, condition, and extent of any archaeological areas, features, or objects likely to be affected by the proposed scheme, including any associated temporary works, and the likely impact of the proposed works on these remains;
- Accurately locate these archaeological areas, features, or objects and document the findings in documented and map/digital format;
- Describe same and discusses their likely provenance;
- Recommend appropriate measures for the avoidance of these remains or, where this cannot be achieved, recommend measures to mitigate the impact of the works;
- Incorporate all the above into a report to inform the project.

1.3 Conventions, Legislation and Guidelines

The assessment was undertaken with due regard to following conventions, legislations, and guidelines:

- Historic and Archaeological Heritage and Miscellaneous Provisions Act 2023
 - Section 225 and a number of non-heritage related “miscellaneous” provisions in Part 13 of the Act have entered into force
 - National Monuments Act, 1930 to 2014 remains in effect
- National Monuments Act, 1930, amended 1954, 1987, 1994, 2004 and 2014
- Heritage Act, 1995
- National Cultural Institutions Act, 1997
- The Architectural Heritage (National Inventory) and Historic Monuments (Miscellaneous) Provisions Act, 1999

- Planning and Development Act, 2000
- Frameworks and Principles for the Protection of the Archaeological Heritage, 1999, Department of Arts, Heritage, Gaeltacht and the Islands
- Local Government (Planning and Development) Act, 2000
- European Convention on the Protection of the Archaeological Heritage (the 'Valletta Convention') ratified by Ireland in 1997
- Council of Europe Convention on the Protection of Architectural Heritage of Europe (the 'Granada Convention') ratified by Ireland in 1997
- International Council on Monuments and Sites (ICOMOS), advisory body to UNESCO concerning protection of sites and recommendation of World Heritage sites ratified by Ireland in 1992.

1.4 Location, Topography and Hydrology

Bantry is a town in the civil parish of Kilmocomoge in the barony of Bantry on the southwest coast of Co. Cork. It lies at the head of Bantry Bay, one of the largest and deepest inlets to be found on the western seaboard of Ireland. The Beara Peninsula is located to the northwest and Sheep's Head peninsula is to the southwest.

The proposed works extend for 450m through Bridge Street, New street and Wolf Tone Square into Bantry Harbour.

Bantry Town falls within the River Bantry catchment. The River Bantry is 2.2km long, rises near Ardnageehy More and flows along a fairly steep channel before passing into a tidally influenced culvert under Chapel Street in Bantry. The culvert passes under Bantry town centre and terminates in an outfall into Bantry Harbour. The River Bantry is joined by five tributaries: the Knocknaveagh, Sheskin East, Carrignagat, Dromleigh and Reenrour tributaries. The Reenrour Stream is the largest tributary to the River Bantry, and its lowest reach is culverted, having a junction with the River Bantry in the long culvert beneath Bantry Town (OPW 2016, 6).

In Bantry Town, elevations increase from 2m ODM at the harbour to over 280m ODM in the headwaters of Bantry Stream. The urban areas are located immediately adjacent to the steep Bantry Stream with 140,000m² around Wolfetone Square located below 5m ODM. There are also low-lying areas vulnerable to coastal flooding around the Bantry House Estate (*ibid.*, 9).

Bantry is generally underlain by Dinantian Mudstones and sandstones, which forms a relatively impermeable geology.

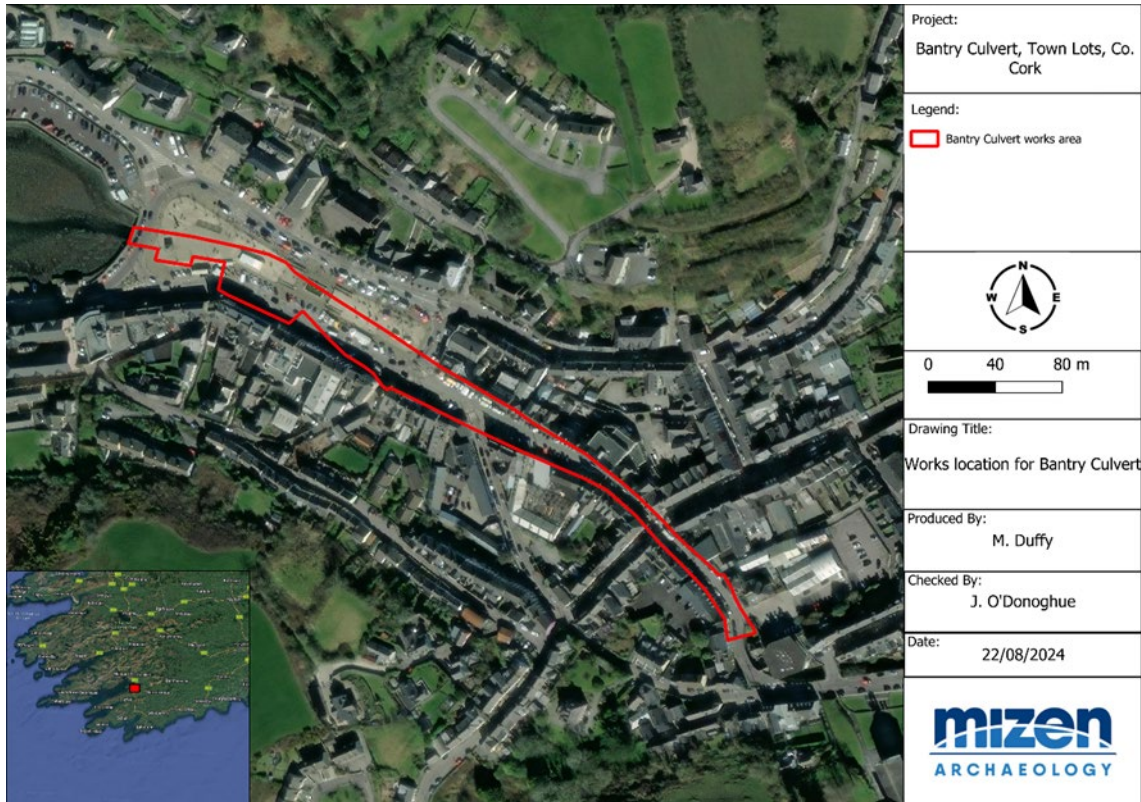


Figure 1: Site location map.

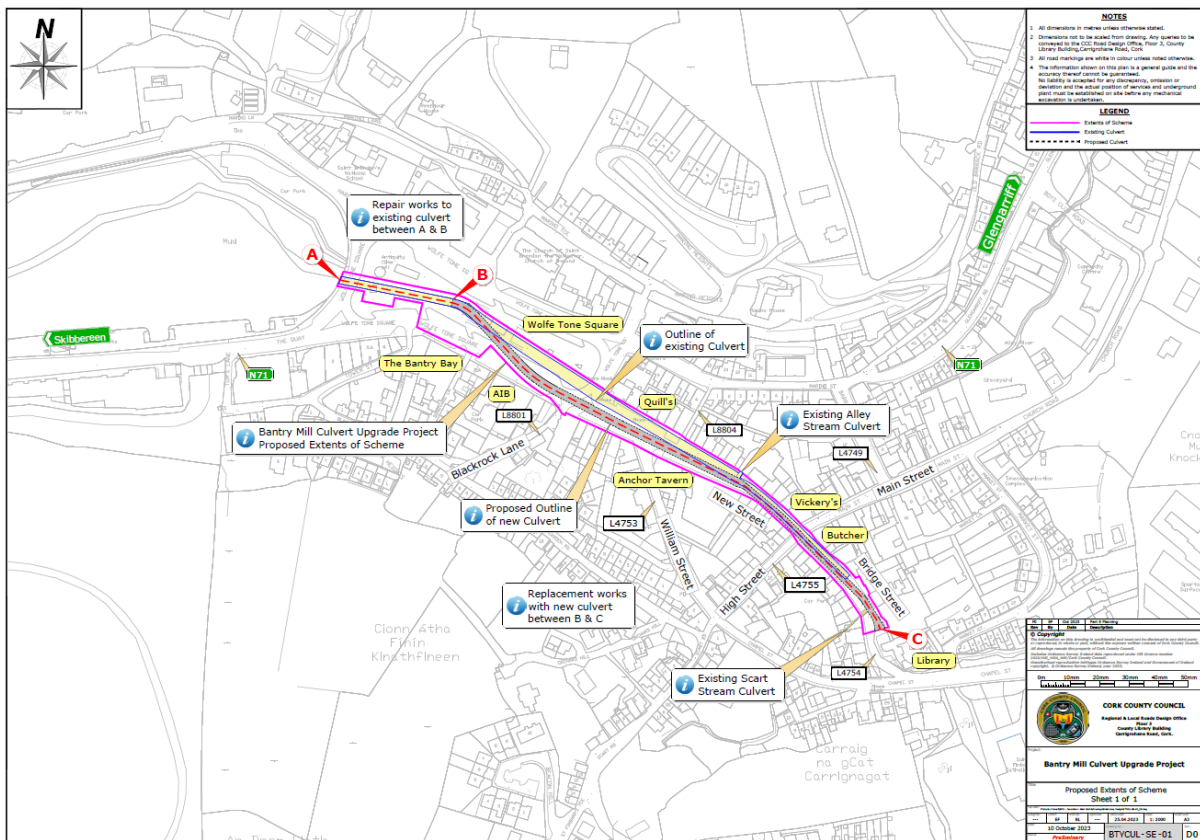


Figure 2: Site Location map showing existing proposed works.

1.5 Description of Proposed Works

The proposed upgrade of the Bantry Culvert involves the replacement of the existing deteriorating culvert in the town. The new culvert will be larger and more hydraulically efficient than the existing culvert, and there will be some additional capacity within the culvert during flood events.

2 Methodology

2.1 Desktop Study

The following sources were consulted to compile the archaeological and historical background:

- The Record of Monuments and Places (RMP), compiled by the Archaeological Survey of Ireland, comprises lists, classifications of monuments, and maps of all recorded monuments with known locations and zones of archaeological significance. The monument records are accessible online from the National Monuments Service (NMS) of the Department of Housing, Local Government and Heritage at www.archaeology.ie. These were consulted to establish the wider archaeological context of the site.
- Ordnance Survey Ireland (OSI) historic and contemporary maps were examined to measure the changing landscape of the riverbank and the development of the town.
- The Excavations Bulletin online database (www.excavations.ie), which contains summaries of all archaeological excavations in Ireland, was consulted to review previous archaeological investigations in the area.
- The Record of Ports and Harbours is an unpublished draft document compiled by the DAHG. It draws on various historical sources dealing with historical piers and harbour development in Ireland.
- Cartography- several historic maps and charts were examined (see Bibliography below for a full list).
- Aerial photography- a variety of low and high-altitude aerial photography was examined (see Bibliography below for full list).
- Documentary sources- several sources were examined. For a full list of all sources examined see Bibliography below.
- Topographical files of the National Museum of Ireland.

2.2 Site Inspection

The route of the proposed upgrade was inspected by a team of archaeologists during September 2024 (Figure 1). Any features of potential archaeological significance were recorded (written and photographic record) and georeferenced accordingly.

3 Results

3.1 Archaeological and Historical Background

The town of Bantry has developed around the harbour since at least the late 16th century. The harbour was once more extensive eastwards, but has seen reclamation since the mid-19th century, with Wolfe Tone Square now partly occupying the reclaimed land.

The annals credit Richard De Carew with the building of Dún na MBárc (Dunnamark) 2km to the north of Bantry in c. 1215.

In 1460, a Franciscan Abbey was founded by Dermot O’Sullivan 2km west of the present town. The earliest map of the area, dating to the late 16th Century illustrates the abbey but there is no indication of a town or wider settlement (Hourihan, 1977).

With the general decline of the Anglo-Norman power in Ireland and the resurgence of Gaelic Irish in the 14th century, the Mac Carthy’s power grew stronger in Munster and their underlords, the Sullivan Beara Clan, regained control of the Bera and Bantry area. Following the failed Desmond Revolt in 1583, the English Crown “planted” Munster with loyal English colonists, granting them land confiscated from those who fought on the Desmond side. In 1588, the Lands of seignory of Clandonnell Roe, which included Bantry, was granted to Edward Rogers (Breen 2005). The stimulus for the plantation in Bantry was the pilchard fishery which had been an intensive industry under O’Sullivan Bera and had attracted many foreign fishermen (Hourihan, 1977). In 1590, Bantry was granted to Richard Beacon, including rights to all waters, watercourses, creeks, ports, havens, fishing, and custom of fish. Two years later, Beacon sold the lands to Richard Goldfinch.

Excavations by Collin Breen in the grounds of Bantry House at Blackrock revealed the remains of structures associated with the plantation settlement which were constructed along the edge of the Inner Harbour in the late 1580s/early 1590s. The settlement is also depicted on an early 17th century map of Bantry (East Yorkshire Archives). The map illustrates two separate settlements- Ballygobben and Blackrock- occupying what is now the town of Bantry (Figure 6). Blackrock was located along the

shore of the Inner Harbour from Blackrock Point to an inlet below the Franciscan Friary, overlooking a favourable anchorage in Bantry Bay.

During the 17th century, fishing continued to be a mainstay of the local economy, but new industries also developed exploiting the availability of woodland in the area (Breen 2005).

With the outbreak of the rising in 1641, the Irish advanced from the hills and dispossessed the town-based settlers, but capitulated to the advancing Cromwellian forces in about 1650 (Hourihan, 1977). Shortly afterwards a star-shaped bastioned fort (CO118-002001) was built to the northwest of Bantry. Sometime after the establishment of the fort, Newtown settlement (CO118-002004) was founded at the same location by Roger Boyle, Lord Broghill. The Census of Ireland in 1659 records that Newtown had by then a population of 119 householders, 34 of whom were English and 85 were Irish. The occupation of the settlement appears to have been short lived; its demise seems to have resulted from direct economic competition with Ballygubbin (Bantry). Two differing plans of Newtown survive from the 1680s: Thomas Philip's vista of Bantry Bay in 1685 and a French map of 1687-8. The settlement was abandoned by the end of the seventeenth century and was later incorporated into the eighteenth-century demesne of Newtown House (Breen 2002, 51).

Bantry House, originally known as Blackrock House was built by Samuel Hutchinson at the beginning of the 18th Century and was subsequently sold to Richard White in the 1750's, who renamed it Seafield House.

In December 1796, with the help of Wolfe Tone, a 43-ship fleet commanded by Vice-Admiral Morand de Galles, left Brittany for a landing in Bantry Bay. The French hoped that securing Ireland's independence would help France conquer England. The landing proved impossible due to the severe weather conditions.

Deforestation of the surrounding area in the 17th and 18th centuries contributed to development of the road network servicing the town (ibid).

Prior to the withdrawing of the protecting duties in 1820, hundreds of people were employed in the linen industry in Bantry which frequently generated sales in excess of £4000 per annum (Lewis, 1839).

During the late 18th century the Irish fishing industry declined. In his 'Statistical Survey of the County of Cork' (1810), Rev. Townsend noted demise of fishing activities in Bantry Bay:

The remote situation of Bantry, not withstanding its proximity to such a bay, seems to preclude it from emerging above the obscurity of a little country town. The original cause for prosperity, and which would now be cable of conferring it in no ordinary degree, has long ceased. In the beginning of the last

century, the bay abounded with pilchards, the catch and curing of which gave, even at that time, wealth and employment to numbers, as many remaining vestiges of the houses employed for this purpose sufficiently attest Cork' (Townsend, 1810).

According to the report of the Irish Fisheries in 1821, 1,162 men were employed in the fishery in Bantry which was considerably less than Baltimore or Kinsale (Hourihan, 1977). By 1836 the fishery was principally confined to hake, in which 24 hookers were engaged, each carrying fifteen men; and mackerel, herrings, and sprats were fished to a lesser extent (Lewis 1837). In the same year thirty-one vessels totalling 1010 tons, exported corn from Bantry while 26 vessels totalling 814 tons entered Bantry, of which, two were foreign ships laden with timber from America, and the remainder coasters with cargoes of salt, coal, earthenware, and iron (ibid). Sand dredging was also carried out in the harbour.

A flour Mill operated at the southern end of Bridge Street, which was previously known as Mill Street. Pigot & Co's Provincial directory of Ireland published in 1824 list the business as *Clerke and Kingston, millers (Bantry Mills)*. In 1837 it belonged to Messrs. Kingston and Co. and was the sole manufacturer in the town capable of producing 12,000 bags annually (Lewis, 1837). In 1852 Jeremiah O'Connell is listed as the occupier of the Mill building which was in held in fee and valued at £70 (Griffith's Valuation).

Lewis notes the establishment of a constabulary police station, court house, bridewell, a parish church, a large R. C. chapel, a Wesleyan Methodists church, two school-houses and a dispensary (Lewis 1837).

Significantly, he also provides infrastructural information regarding the proposed works area:

It consists of two parallel streets leading towards the bay, on opposite sides of the river, over which are two bridges, and a cross street, affording communication between them: the streets are indifferently paved, and not lighted; the inhabitants are supplied with water from numerous springs.

3.2 Recorded Archaeological Monuments

There are no recorded monuments in the immediate surrounds of the proposed works area. The closest SMRs are an 18th century protestant church (CO118-034001) and its associated graveyard (CO118-034002) lying 140m to the north. To the southwest of the works area, in the townland of Seafield, a ringfort (CO118-032) and Bantry House (CO118-075) are located 650m and 800m to the southwest respectively. Further details regarding these sites are provided in Appendix 1.

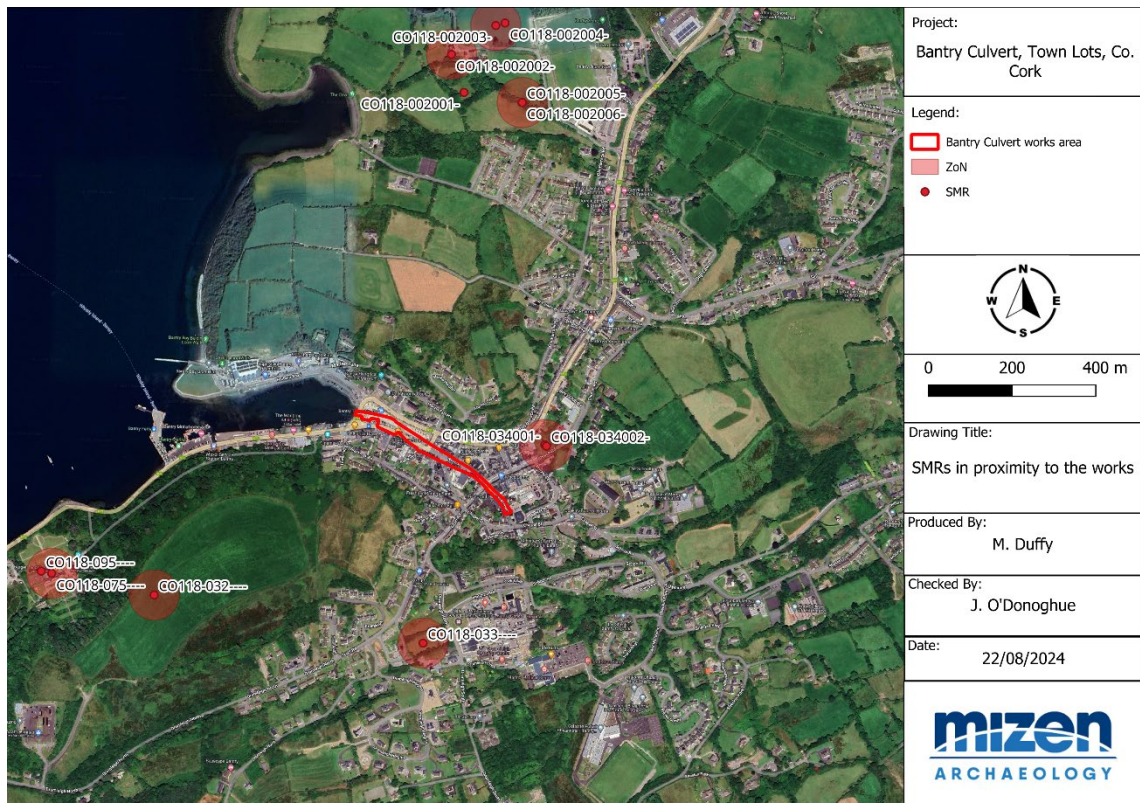


Figure 3: Extract from the National Monuments service Historic Environment Viewer showing archaeological monuments in proximity to the works area.

3.3 Architectural Heritage

A total of 83 structures are listed in the National Inventory of Architectural Heritage (NIAH) for the town of Bantry with a further three associated with Bantry House (Appendix 2). Of these, 44 are also recorded protected structures (Appendix 3).

The culvert lies within two architectural conservation areas (ACA's): the Public and Commercial Centre Conservation Area, and the Chapel Conservation Area.

A separate report has been prepared by Southgate Associates to address the architectural heritage element of the project.

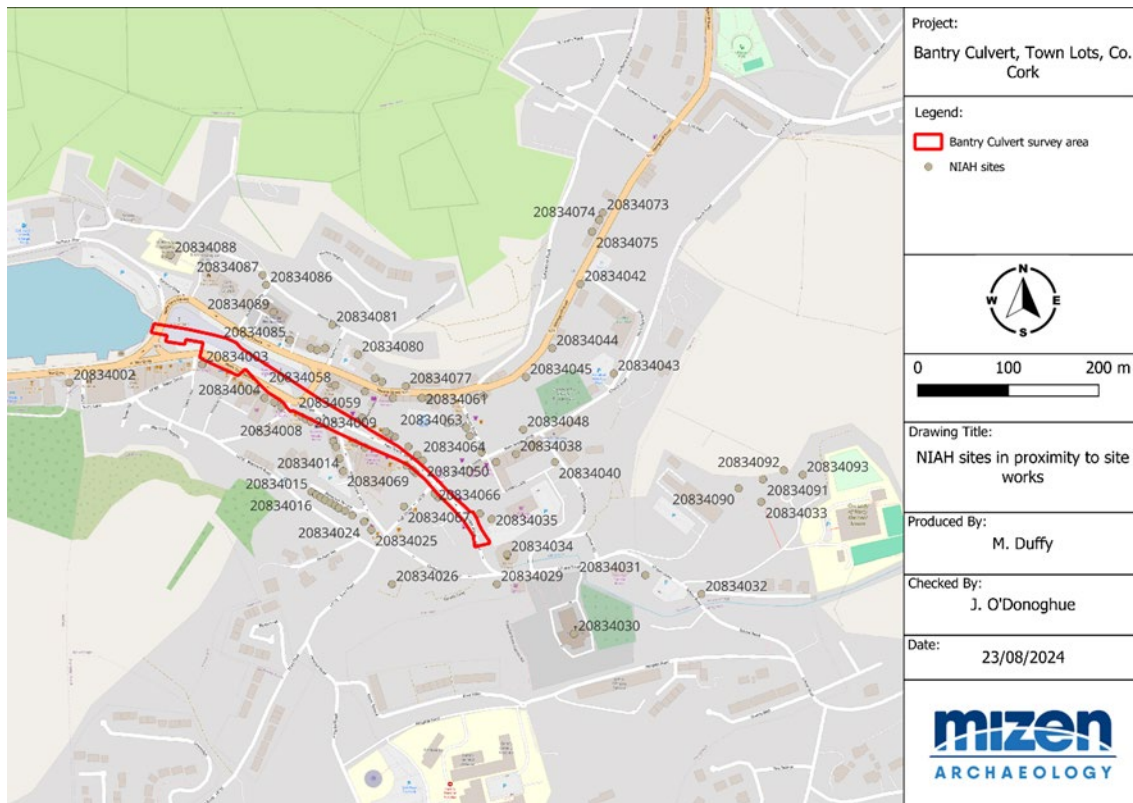


Figure 4: Extract from the National Monuments service Historic Environment Viewer showing NIAH sites in proximity to the works area.

3.4 Cartographic Information

Perhaps the earliest detailed depiction of Bantry is a map dating to c.1558. This map is held in the British National Archives, London (MPF/1/94) and illustrates Bantry Bay, along with various forts, houses, huts, and sea craft (Figure 5). The cartographer recorded a series of significant settlements on Whiddy Island, as well as a building on one of the Chapel Islands. This may be the church of Iniscuingi (CO118-098) that was listed in a religious document in 1199 (Breen 2005, 175-7). On the mainland, Bantry Abbey (CO118-030002), a Franciscan friary founded by Dermot O’Sullivan Beare in 1460, is also indicated in some detail, sitting within a walled enclosure beside an inlet, and with a series of small triangular structures drawn outside the friary to the south. A series of similar structures is indicated to the east, on the opposite side of the inlet. There appears to have been a tower house and other buildings close by, as well as another series of buildings located further along the coast. Excavation in the grounds of Bantry House at Seafield (CO118:095, license 01E648), uncovered the remains of small house structure, considered to be the modest remains of a Gaelic residence, which has been interpreted as forming part of the former settlement depicted on the c.1558 map.

The first edition of the Ordnance Survey six-inch series (1842) reveals that the late sixteenth / early seventeenth-century settlement known as Blackrock had disappeared; its location now occupied by the parkland demesne of Bantry House (CO118-075 & 20911812). Bantry had become a moderately-

sized town by the early nineteenth century. A principal wide road ran along the south shore, with houses built to the landward side, and a 'new quay'. A number of prominent buildings flanked this open space, namely the courthouse, the bridewell (or local gaol), and a church (the Anglican Church of St. Brendan the Navigator, built in 1815). A stream is illustrated at the eastern limits of the works area entering a mill pond beside a mill building. To the east of the mill pond, a waterfall and dam are annotated. To the west of the mill pond, the stream is culverted.

Later editions of the Ordnance Survey maps such the twenty-five-inch series (1897) reveal further development Bantry, which included some reclamation of the mudflats on the eastern and northern sides of the harbour. Importantly, reclamation had taken place on the main square of the town expanding over some of the mudflats. The culverted stream is shown issuing into Bantry Harbour at Egerton Square.



Figure 5: Extract from 16th century 'Map of area in County Cork and County Kerry, Ireland, around Bantry Bay.' The National Archives MPF 1/94

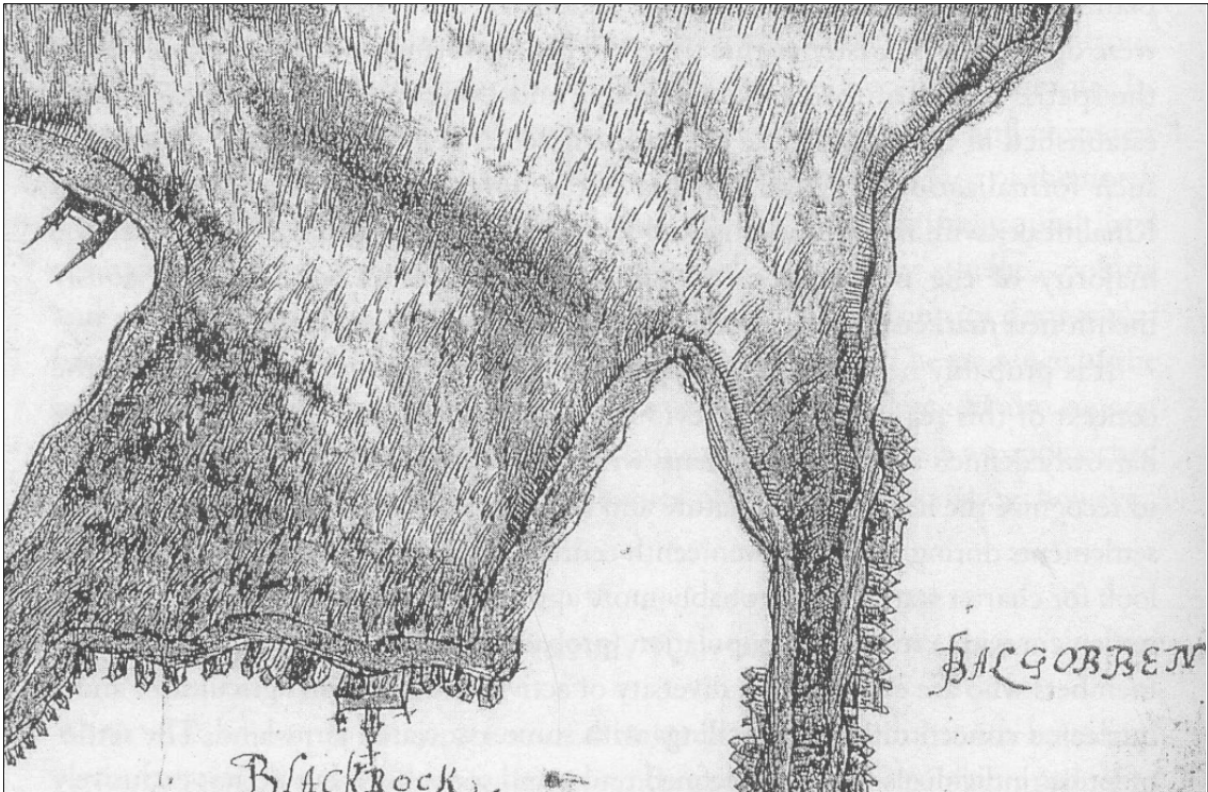


Figure 6: Early 17th century map of Bantry (East Yorkshire Archives), published by Breen (2005).

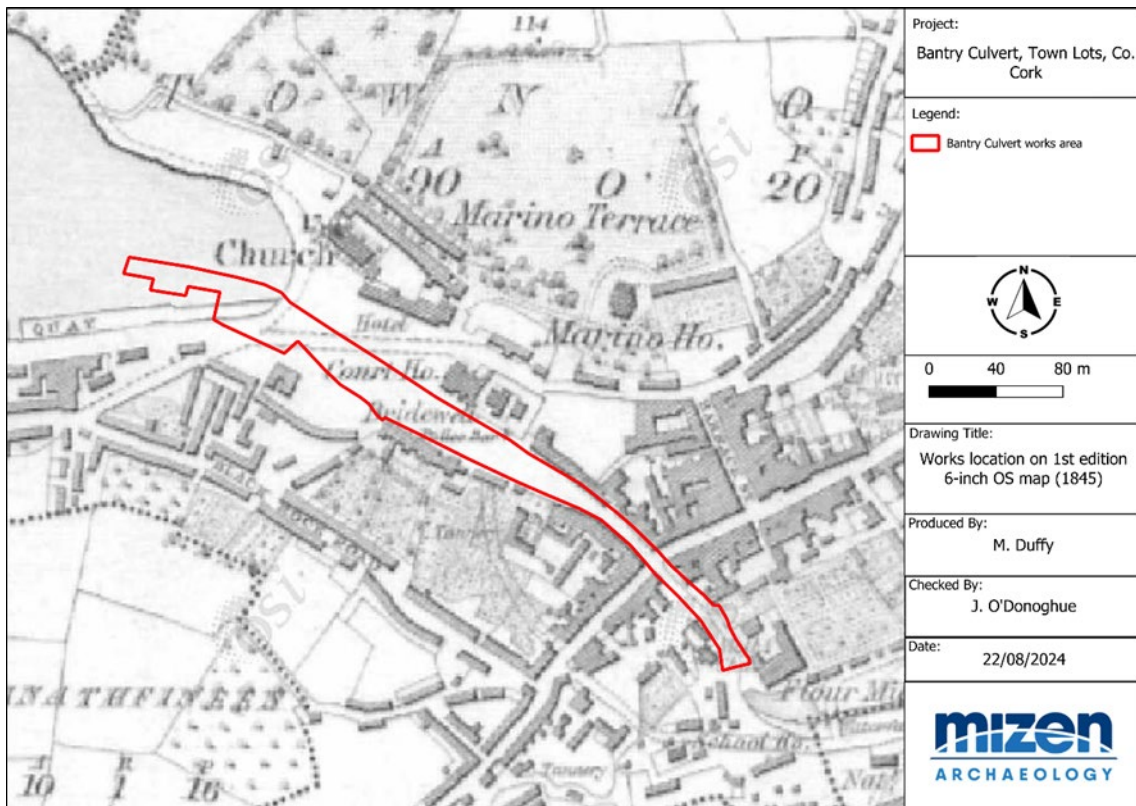


Figure 7: Location of works in Bantry on first edition 6-inch OS Map (1845)

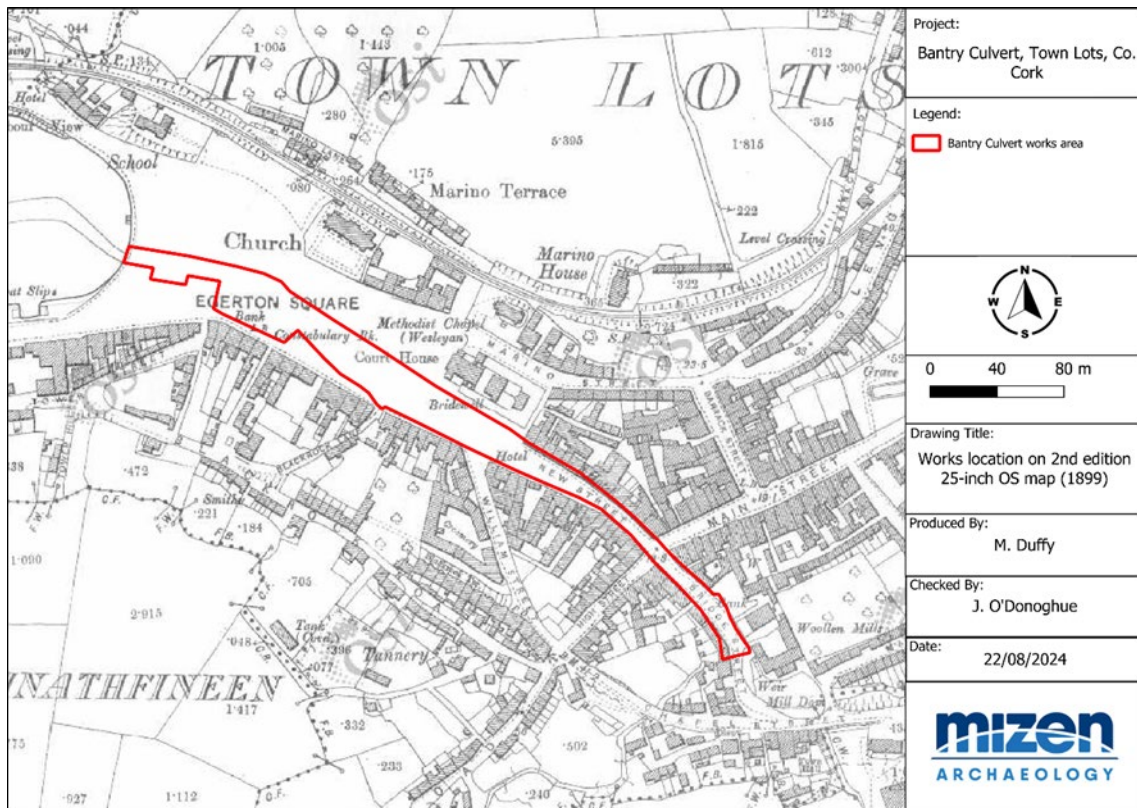


Figure 8: Location of works in Bantry on second edition 25-inch OS Map (1899)

3.5 Previous Archaeological Investigations within the vicinity of the proposed development

Several archaeological investigations have been undertaken in Bantry, and two of these relate directly to the culvert. Lane Purcell Archaeology recorded a random rubble culvert while carrying out monitoring of water-mains rehabilitation works on Main Street and Barrack Street (18E0544).

Mizen Archaeology monitored site investigation works for Bantry Flood Relief Scheme in 2023 (22E0870). The upper surface of the stone culvert was encountered in 5 trenches (16997-MWP-ST1, 16997-MWP-ST2, 16997-MWP-ST4, 16997-MWP-ST5 and 16997-MWP-ST6a).

4 Site Inspection

Mizen Archaeology visited the site in September 2024. The footprint of the proposed works and surrounding area was subject to a visual inspection. The culvert entrance at the former mill site and exit at the Quay on Wolf Tone Square were inspected. The interior of the culvert was not accessible for this assessment. An engineering report including a comprehensive survey of the culvert was carried

out by Malachy Walsh and Partners (MWP) in 2018. It includes a detailed photographic record, ground plan and section drawings. The MWP report was reviewed for the archaeological assessment.

The Bantry culvert system consists of a main culvert carrying the Mill River for a length of 445m, a 103m long side culvert to the south which carries the Scart Stream into the main culvert and a 166m long culvert to the north which carries the Alley Stream.

The MWP report notes that the Mill River culvert can be divided into 3 sections and details from the report have been summarised as follows:

Section A: a single span masonry arch culvert measuring 137m in length carrying the Mill River from the site of Bantry Mill (now Bantry Library). The Scart Stream discharges, via twin stone culverts through the southern abutment into this section of the culvert. It is in adequate condition. There are a number of areas of open jointing, minor scour damage in areas and circumferential cracking.

Section B: a twin span masonry arch measuring 220m in length. The Alley Stream culvert discharges into the northern twin culvert. It is in very poor condition. The stonework is open jointed with little or no mortar visible. There are several areas of dropped stones, a number of circumferential cracks and areas where the arch has partially collapsed in both spans. A number of areas of the pier and abutment have also partially collapsed or been severely scoured.

Section C: a single span precast prestressed beam on reinforced concrete abutments measuring 88m in length and terminating at Bantry Harbour. It is generally in good condition.

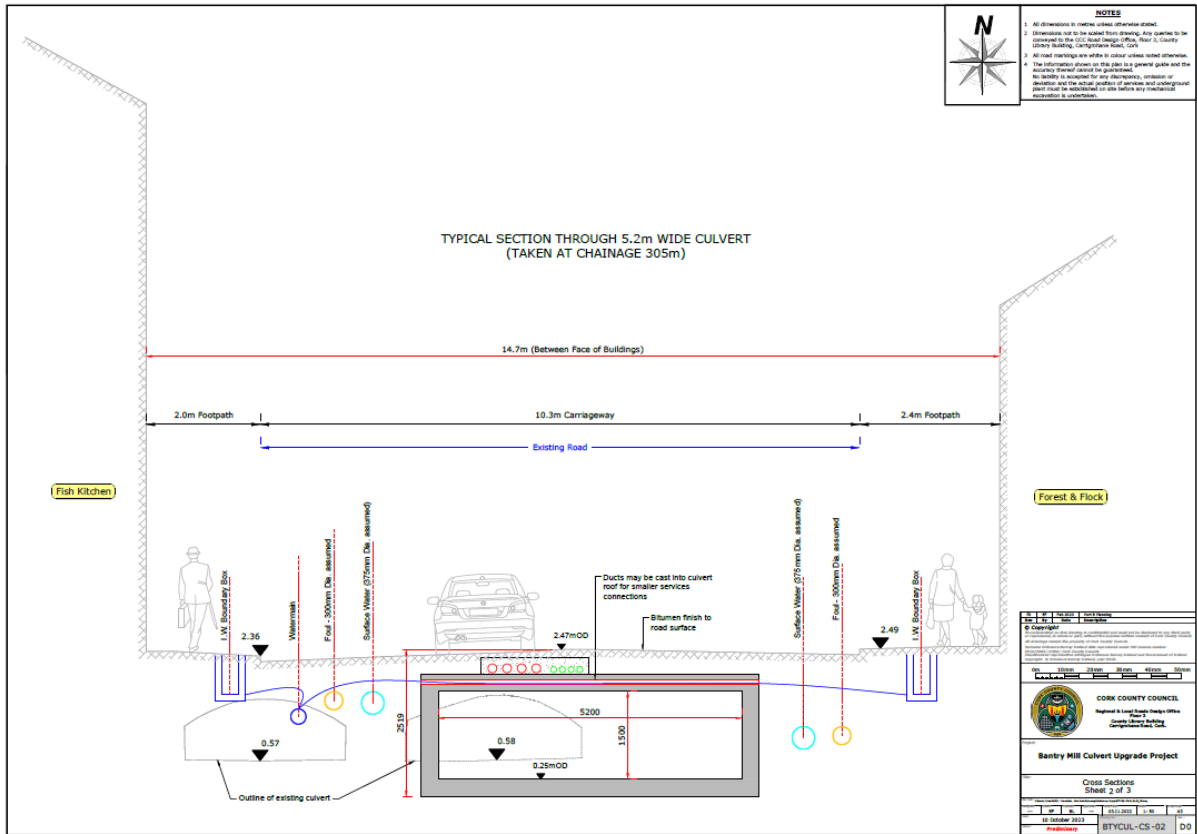


Figure 9: Cross section showing proposed works and existing culvert.



Plate 1: Image of interior of culvert (MWP, 2018). Plate 2: Image of interior of culvert (MWP, 2018).



Plate 3: View of Wolfe Tone Square, taken from south.



Plate 4: View of culvert inlet behind replica mill wheel on site of former mill.



Plate 5: View of Bridge street with Library in view, including NIAH 20834066 & 20834065 ,taken from west.



Plate 6: View of culvert visible from harbour, taken from south.

5 Impact of Proposed works

There are no recorded archaeological monuments in the immediate vicinity of the proposed works area. No new archaeological sites were identified in the preparation of this assessment. The likelihood of encountering in-situ unrecorded monuments during the construction phase is low.

The Bantry culvert system is a valuable cultural heritage asset. It reflects what was likely the earliest municipal investment in water infrastructures in the town, a measure that was expected to alleviate flooding and water-borne-diseases as well as promoting economic development. It is preserved to varying degrees and displays a range of styles in stone building techniques including segmental arches, semi-circular arches and lintel culverts.

The proposed upgrading works involve the installation of a pre-cast concrete culvert with internal dimensions of 5.2m in width and 1.5m in height along the Mill River culvert from the site of the former mill to the Bantry Harbour. It will result in the demolition of the majority of the Mill River stone culvert. The new culvert will follow a more regular linear route than the existing stone-built structure (Figure 2). The section of culvert not lying directly on the footprint of the new culvert may be impacted during construction stage due to close proximity and it will also need to be backfilled during the construction phase.

The nature of the impact is classified as direct, negative and irreversible.

6 Recommendations

A programme of licensed archaeological monitoring during the construction stage should be agreed with the National monuments Service and the Cork County Archaeologist. Details of the stone culvert should be fully recorded with photography, measurements and drawings where appropriate. Any additional sub-surface features such as buried street surfaces etc should be fully recorded.

7 Bibliography

Documentary Sources

Breen, C. 2005 *The Gaelic Lordship of the O'Sullivan Beare*. Dublin: Four Courts Press.

Forsythe, W. (2007) *Bantry Bay, County Cork, a Fortified Maritime Landscape*. *Historical Archaeology*

Hourihan, J.K. (1977) *Town Growth in West Cork: Bantry 1600-1960* in *JCHAS*, 1977, Vol. 82, No.236, pp 83-97.

Malachy Walsh and Partners (2018) *Bantry Culverts Report on Inlet Surveys*. Unpublished report.

Townsend, H. (1810) *Statistical Survey of the County of Cork*. Dublin: Graisberry and Campbell.

Other Sources

Excavations Bulletin: www.excavations.ie

Historic Environment Viewer, National Monuments Service: www.archaeology.ie

Irish Placenames website: www.logainm.ie

National Inventory of Architectural Heritage (NIAH): <http://www.buildingsofireland.ie/niah/>

National Monuments Service: www.archaeology.ie

Ordnance Survey of Ireland: www.osi.ie

8 Appendices

Appendix 1: List of archaeological monuments (SMR) in vicinity of Bantry town

SMR	Identification	ITM	Description
CO118-034001	Church	499836, 548519	Ruins of 18th century protestant church in walled graveyard (CO118-0340002-) in Bantry Town. Ivy-clad rectangular church (21.85m E-W; 7.9m N-S) with central doorway in W gable and oculus above; gable topped by bellcot. Four blocked windows in S wall and three in N wall. E gable replaced by neo-romanesque doorway into large vault of Earls of Bantry. Described in 1749 as a "decent parish church" (Smith 1815, Vol. 1, 285) but a new church built in 1818 (Brady 1863, Vol. 1, 166-7).
CO118-034002	Graveyard	499840, 548516	This graveyard is referred to in the 'Archaeological Inventory of County Cork - vol. 1 West Cork' (1992, 370) under the entry (no. 2257) for a Church of Ireland Church (CO118-034001-). The reference in the entry reads as follows: 'Ruins of 18th century protestant church in walled graveyard (CO118-0340002-) in Bantry Town.'
CO118-033----	Burial Ground	449545, 548045	In pasture on N-facing slope. Burial ground inaccessible due to heavy overgrowth.

Appendix 2: Structures listed on the NIAH in the vicinity of proposed development

NIAH No.	ITM	Description
20834002	499291 548535	Detached three-bay two-storey gate lodge, built c.1845, with integral carriage arch to central bay. Hipped slate roof having cast-iron rainwater goods and coursed cut stone parapet, with dressed stone coping and string course. Coursed cut and tooled ashlar limestone walls (north and south) and rubble stone walls (east and west) with metal support brackets. Square-headed openings with six-over-six (outer bays) and four-over-four (central bay) timber sliding sash windows and stone sills. Square-headed door openings to outer bays with timber panelled doors. Segmental-arched carriage arch to central bay with cut stone voussoirs. Sited within flanking quadrant of roughly coursed rubble stone walls to north-east of Bantry House and at west entrance to Bantry town.
20834003	499438 548555	Corner-sited end-of-terrace six-bay three-storey house, built c.1890, with recent flat-roofed attic projection and shopfront (north elevation). Pitched slate roof with rendered chimneystacks, artificial slate attic projection and cast-iron rainwater goods. Painted rendered walls with render corbels to eaves and render sill courses. Square-headed openings to second floor with two-over-two timber sliding sash windows. Round-headed openings to first floor having one-over-one timber sliding sash windows with moulded render archivolt and continuous impost course. Segmental-headed openings to ground floor with one-over-one timber sliding sash windows, moulded rendered surrounds and painted rendered sills with cast- and wrought-iron sill guards. Carved timber shopfront comprising pilasters supporting scroll bracketed capitals with decorative pediment motif and fascia board with raised lettering. Square-headed opening with timber fixed pane display windows. Square-headed door opening with overlight and timber panelled door. Square-headed door opening to north elevation with timber panelled door and moulded render surround. Cast-iron column and early shop layout visible to interior.
20834004	499507 548518	Attached five-bay three-storey house, built c.1860, with shopfront to ground floor. Pitched slate roof with rendered chimneystacks and cast-iron rainwater goods. Painted rendered walls with render corbels to eaves. Square-headed openings with two-over-two timber sliding sash windows, render surrounds and render sills. Window openings to first floor central bays with alternating render pedimented and segmental-arched head mouldings supported on decorative render scroll brackets. Render shopfront comprising ruled pilasters and moulded capitals supporting fascia

		board and cornice with moulded corbels. Square-headed openings with replacement timber paired round-headed fixed pane display windows. Square-headed door opening with replacement overlight and double-leaf timber panelled door. Round-headed door opening (east bay), giving access to upper floors, having moulded render pilasters and archivolt with carved timber framed sidelights and fanlight and timber panelled door.
20834005	499518 548513	Terraced three-bay three-storey house, built c.1860, with replacement shopfront to ground floor. Pitched artificial slate roof with rendered parapet, chimneystack and moulded red brick and render eaves course. Attic accommodation visible to rear (south-west). Painted rendered walls with moulded red brick sill courses and stringcourse following window surrounds to second floor. Segmental-headed window openings with red brick block-and-start surrounds, having uPVC windows to second floor, one-over-one timber sliding sash windows to first floor with projecting moulded brick cornice to outer bays, moulded render pediment on scroll brackets to central bay. Replacement shopfront comprising segmental-headed opening with red brick surround, fixed timber framed glazing and timber and glazed door. Segmental-headed door opening to east bay giving access to upper floors, having red brick block-and-start surround with carved timber framed sidelights and fanlight and timber panelled door.
20834006	499526 548508	Corner-sited end-of-terrace L-plan four-bay three-storey house, built c.1860, having canted corner bay and shopfront to ground floor. Pitched slate roof with rendered parapet, chimneystack, cast-iron rainwater goods and painted moulded red brick and render eaves course. Painted rendered walls with painted moulded red brick sill courses and string course following window surrounds to second floor. Segmental-headed openings having painted red brick block-and-start surrounds. Projecting painted moulded brick cornice to outer bays of first floor and moulded render pediment on scroll brackets to central bay. Openings with timber fixed pane window to ground floor and uPVC windows elsewhere. Square-headed openings to canted corner bay with painted red brick block-and-start surrounds and uPVC windows. Segmental-headed opening to east elevation with one-over-one timber sliding sash window, rendered sill and wrought-iron window guard. Segmental-headed window openings to east elevation with replacement uPVC windows. Carved timber shopfront comprising pilasters with capitals supporting scroll brackets, fascia board and dentilated cornice. Square-headed opening with timber fixed pane display windows

		arranged as paired round-headed openings with glazed spandrels. Square-headed door opening to canted corner bay giving access to ground floor having double-leaf timber panelled doors, overlight and render door case comprising engaged fluted columns supporting scroll bracket capitals and moulded render cornice. Segmental-headed door opening to north-east elevation giving access to upper floors and having timber glazed door, overlight and painted moulded red brick block-and-start surround. Square-headed door opening to south-east elevation giving access to ground floor and having timber glazed door and overlight with render door case comprising engaged fluted columns supporting moulded cornice.
20834007	499548 548497	Terraced three-bay three-storey house, built c.1840. Pitched slate roof with shared rendered chimneystack and cast-iron rainwater goods. Painted lined-and-ruled rendered walls. Segmental-headed openings with one-over-one timber sliding sash windows and painted stone sills. Square-headed opening to ground floor with timber casement window and painted rendered sill. Square-headed door opening with timber panelled door, timber framed sidelights and overlight.
20834008	499553 548494	Terraced three-bay three-storey house, built c.1840, with shopfront to ground floor. Pitched artificial slate roof with shared rendered chimneystack and uPVC rainwater goods. Painted lined-and-ruled rendered walls with uPVC lozenge-shaped signage to first floor. Segmental-headed openings with one-over-one timber sliding sash windows, painted stone sills and rendered surrounds. Shopfront comprising timber and uPVC fascia board over square-headed aluminium fixed pane display windows and door openings.
20834009	499558 548492	Terraced three-bay three-storey house, built c.1840, with shopfront to ground floor. Pitched artificial slate roof with shared rendered chimneystack and cast-iron rainwater goods. Painted lined-and-ruled rendered walls with sill course. Segmental-headed openings throughout having one-over-one timber sliding sash windows with painted stone sills (second floor). Recent render shopfront comprising fluted pilasters supporting fascia board with fluted detail to edge, uPVC name plate and square-headed openings with timber casement windows. Square-headed door opening with overlight and timber glazed door.
20834011	499583 548470	Attached two-bay three-storey house, built c.1880, with shopfront to ground floor. Pitched slate roof with rooflights, rendered chimneystack and cast-iron rainwater goods. Painted rendered walls, render corbelled eaves course and metal plaque. Square-headed openings with timber casement windows to second floor, two-over-

		two timber sliding sash windows to ground floor and painted stone sills throughout. Carved timber shopfront comprising pilasters supporting fascia board with scroll brackets and pediment capping. Square-headed opening with timber fixed pane display window. Canted square-headed door opening to centre of shopfront, having double-leaf timber glazed doors. Square-headed door opening to north end of shopfront, giving access to upper floors, having timber glazed door and margined overlight.
20834012	499586 548464	Attached three-bay three-storey house, built c.1880, with shopfront to ground floor. Pitched slate roof with red brick and rendered chimneystacks, rooflights and cast-iron rainwater goods. Painted rendered walls with render corbelled eaves course. Square-headed openings with two-over-two timber sliding sash windows, having painted sills (second floor) and sill guards (first floor). Carved timber shopfront comprising pilasters supporting fascia board and scroll brackets with decorative pediment capping and cornice. Square-headed openings with replacement timber fixed pane display window and timber glazed door. Square-headed door opening to north end of shopfront, giving access to upper floor and having timber panelled door, overlight and sidelights.
20834013	499590 548451	Attached four-bay two-storey Art Deco style commercial premises, built c.1940, with shopfront to ground floor. Pitched artificial slate roofs with cast-iron rainwater goods. Painted roughcast rendered walls with raised render lettering above shopfront. Square-headed openings with timber casement windows and painted rendered sills. Render shopfront comprising engaged faceted columns supporting moulded lintel. Square-headed openings having timber fixed pane display windows and carved dentilated detailing over tiled panels. Recessed square-headed door opening to centre of shopfront having double-leaf timber glazed doors and overlight.
20834014	499594 548437	Attached multiple-bay two-storey Art Deco style commercial premises, built c.1940, with shopfronts to ground floor. Pitched artificial slate roofs with cast-iron rainwater goods. Painted roughcast rendered walls. Square-headed openings with timber casement windows and painted rendered sills. Render shopfront to north comprising engaged faceted columns supporting moulded plinth, with square-headed openings having timber fixed pane display windows. Recessed square-headed door opening to centre of shopfront having double-leaf timber glazed doors and overlight. Render shopfront to south comprising engaged columns supporting moulded lintel, with square-headed opening having timber fixed pane display window with lettering.

		Square-headed door opening giving access to upper floor, having replacement timber panelled door.
20834015	499559 548414	End-of-terrace three-bay three-storey house with canted bay, built c.1830. Pitched roof having rendered chimneystack and uPVC rainwater goods. Flat roof to canted bay with moulded red brick cornice. Rendered walls. Rendered red brick sill course and stall riser to canted bay. Square-headed openings having concrete sills with replacement aluminium windows. Decorative cast-iron sill guards and moulded render keystones to first floor. Square-headed openings to canted bay with replacement uPVC windows, red brick surrounds and arches with sandstone keystones. Square-headed door opening having moulded render keystone and replacement timber panelled door with overlight. Wrought-iron enclosing fence to north-east with rendered gate piers and wrought-iron gate.
20834016	499564 548411	Terraced three-bay three-storey house with canted bay, built c.1830. Pitched roof having red brick chimneystack and uPVC rainwater goods. Flat roof to canted bay. Rendered walls with red brick walls to canted bay having moulded red brick cornice and sill course. Square-headed openings with margined one-over-one timber sliding sash windows with concrete sills. Decorative cast-iron sill guards and moulded render keystones to first floor. Square-headed openings to canted bay with one-over-one timber sliding sash windows, red brick surrounds and rubbed arches with sand stone keystones. Square-headed door opening having moulded render keystone and replacement timber panelled door with overlight. Wrought-iron enclosing fence to north-east with rendered gate piers and wrought-iron gate.
20834017	499569 548408	Terraced three-bay three-storey house with canted bay, built c.1830. Pitched roof having rendered chimneystack, cast-iron and uPVC rainwater goods. Flat roof to canted bay. Rendered walls. Moulded cornice and sill course to canted bay. Square-headed openings with margined one-over-one timber sliding sash windows with concrete sills and decorative cast-iron sill guards (first floor). Square-headed openings to canted bay with one-over-one timber sliding sash windows. Square-headed door opening having moulded render keystone and replacement timber panelled door with overlight. Wrought-iron enclosing fence to north-east with rendered gate piers and wrought-iron gate.
20834018	499574 548405	Terraced three-bay three-storey house, built c.1830. Pitched artificial slate roof having rendered chimneystack and uPVC rainwater goods. Rendered walls. Square-headed openings with concrete sills, decorative cast-iron sill guards (first floor),

		moulded (ground floor) and plain (first floor) render keystones and replacement aluminium casement windows. Square-headed door opening having moulded render keystone and replacement timber panelled door with overlight. Wrought-iron enclosing fence to north-east with rendered gate piers and wrought-iron gate.
20834019	499580 548402	Terraced three-bay three-storey house, built c.1830. Pitched artificial slate roof having rendered chimneystack and uPVC rainwater goods. Square-headed openings with margined one-over-one timber sliding sash windows and concrete sills. Decorative cast-iron sill guards (first floor) and moulded render keystones (ground and first floor). Square-headed opening having moulded render keystone and replacement timber panelled door with overlight. Outbuilding to rear (south-west) having pitched corrugated-iron roof, rendered walls, square-headed openings and replacement timber hanging door. Wrought-iron enclosing fence to north-east with rendered gate piers and wrought-iron gate.
20834020	499585 548399	Terraced two-bay three-storey house with canted bay, built c.1830. Pitched artificial slate roof with rendered chimneystack and uPVC rainwater goods. Flat roof to canted bay with crenulated parapet having decorated panels to merlons. Painted rendered walls with raised render plinth. Decorative panels and architrave to canted bay. Square-headed openings with concrete sills, moulded render architraves and uPVC windows. Square-headed openings with rendered lintel and uPVC windows. Round-headed door opening with shared raised render surround (south-east) comprising panelled pilasters and archivolt, having replacement timber panelled door with overlight and rose marble doorstep. Wrought-iron enclosing railing to north-east having rendered gate piers and wrought-iron gate.
20834021	499589 548396	Terraced two-bay three-storey house with canted bay, built c.1830. Recent extensions and to rear (south-west). Pitched artificial slate roof with rendered chimneystack and uPVC rainwater goods. Flat roof to canted bay with crenulated parapet having decorated panels to merlons. Painted rendered walls with raised render plinth. Decorative architrave and panels to canted bay. Square-headed openings with concrete sills, moulded render architraves and uPVC windows. Square-headed openings with rendered sills and uPVC windows to canted-bay. Round-headed door opening with shared raised render surround (north-west) comprising panelled pilasters and archivolt, having replacement timber panelled door with overlight and tooled limestone step. Wrought-iron enclosing railing to north-east having rendered gate piers and wrought-iron gate.

20834022	499596 548393	Terraced four-bay three-storey house with canted bays, built c.1830. Recent flat roof extension (south-west). Pitched artificial slate roof with rendered chimneystack and uPVC rainwater goods. Flat roofs to canted bays with moulded architrave. Painted rendered walls with raised render plinth. Decorative render panels to canted bays. Square-headed openings with moulded render architraves, concrete sills and uPVC windows. Square-headed openings to canted bays with rendered sills and uPVC windows. Round-headed door opening with timber panelled door, overlights, side lights, timber side panels and raised render surround comprising panelled pilasters and archivolt. Wrought-iron enclosing railing to north-east with rendered piers and wrought-iron gate.
20834023	499604 548388	Terraced four-bay three-storey house with canted bays, built c.1830. Recent pitched roof extension (south-west). Pitched artificial slate roof with rendered chimneystack and uPVC rainwater goods. Flat roofs to canted bays with crenulated parapet and moulded architrave. Painted rendered walls with raised render plinth. Decorative render panels to canted bays. Square-headed openings with moulded render architraves, concrete sills, cast-iron sill guards (second floor) and uPVC windows. Square-headed opening to canted bays with rendered sills and uPVC windows. Round-headed door opening with timber panelled door, overlights, side lights, timber side panels and raised render surround comprising panelled pilasters and archivolt. Wrought-iron enclosing railing to north-east with rendered piers, wrought-iron gate and rendered wall with cast-iron railing. Boundary wall attached to terrace boundary comprising rendered gate piers with single and double-leaf decorative cast-iron gates. Remains of cobbled stone drain to east of boundary wall.
20834024	499617 548381	Terrace five-bay three-storey post office, built c.1880, with four-bay three-storey block having cranked bay to south-east. Pitched artificial slate roofs with cast-iron and uPVC rainwater goods. Painted rendered walls with moulded brick sill courses and painted brick quoins to first and second floor (north elevation). Raised rendered lettering and plaque to ground floor (north elevation). Camber-headed openings to north elevation ground floor having one-over-one timber sliding sash windows with painted concrete sills, raised render surrounds and cast-iron window guards. Round-headed openings to north elevation first floor having one-over-one timber sliding sash windows, moulded brick surrounds and raised keystones. Camber-headed openings to north elevation second floor and to north-east elevation having one-over-one (north and north-east ground floor) and margined one-over-one (north-east)

		timber sliding sash windows with painted stone and concrete sills, chamfered and roll moulded brick surrounds and raised keystones. Square-headed openings to rear elevation (south) having one-over-one timber sliding sash windows and timber fixed pane windows with concrete sills and cast-iron window guards. Round-headed opening to rear with one-over-one timber sliding sash window, concrete sill and cast-iron window guard. Camber-headed door openings having timber panelled doors with brass fixings, overlights and raised render surrounds. Square-headed opening to rear elevation first floor (south) with recent timber glazed door and steel flight of steps. Rendered boundary wall to rear with concrete coping and timber battened gate.
20834025	499625 548372	Terraced three-bay three-storey former house, built c.1880, with shopfront to ground floor. Now in use as shop. Pitched artificial slate roof with rendered chimneystack, eaves course and uPVC rainwater goods. Painted rendered walls. Camber-headed openings with two-over-two timber sliding sash windows, concrete sills, red brick block-and-start surrounds and arches with red brick and sandstone key-stones. Timber shopfront comprising pilasters, architrave and cornice with painted fascia. Square-headed openings with timber fixed pane display windows and timber panelled stall risers. Recessed square-headed door opening with double-leaf timber glazed door, overlight and timber panelled reveals.
20834026	499648 548312	Detached five-bay two-storey house with attic accommodation, built c.1860, with canted bay (south-west), box bay (north-east) and block with half-dormers to rear (north-west). Hipped slate roof with overhanging eaves, cast-iron and uPVC rainwater goods, ceramic ridge tiles, rendered chimneystacks and ceramic pots. Hipped slate roof to canted bay and flat roof to box bay. Rendered walls with plinth and render sill course to first-floor. Platband to box bay. Square-headed openings having one-over-one timber sliding sash windows with stone and concrete sills. Square-headed openings to rear with concrete sills and uPVC windows. Square-headed openings to ground floor (south-east) with one-over-one timber sliding sash windows, stone sills and rendered hood moulding with decorative stops. Square-headed opening to rear with bipartite one-over-one timber sliding sash windows with concrete sill. Camber-headed door opening with tooled limestone step, hood moulding with decorative stops and timber panelled and glazed door with stained glass overlight and sidelights. Square-headed door opening to rear with timber panelled door. Rubble stone boundary walls with rendered gate piers and decorative cast-iron single and double-leaf gates.

20834029	499764 548312	End-of-terrace three-bay two-storey house with dormer attic, built c.1900. Pitched artificial slate roofs with rendered chimneystacks, dormers and uPVC rainwater goods. Painted and lined-and-ruled rendered walls. Slate hanging to dormers. Square-headed openings with two-over-two timber sliding sash windows, concrete sills and cast-iron sill guard (ground floor). Timber tympanum to dormers. Timber shopfront to ground floor comprising pilasters supporting entablature with architrave, cornice and painted fascia board. Square-headed opening with timber fixed pane window opening, window guard and timber sill. Square-headed door opening with timber panelled door and overlights.
20834030	499849 548257	Freestanding cruciform-plan double-height gable-fronted Roman Catholic church, built 1826, having three-bay entrance front with central breakfront, four-bay nave, single-bay transepts (east and west) and chancel (south). Later sacristy (south-west) and two-bay two-storey addition (south). Recent wrought-iron flight of steps (north). Pitched slate roofs having copper coping to nave, ashlar stone bellcote (north gable) and cast-iron rainwater goods. Decorative ridge tiles, cast-iron cross finial and vent to sacristy. Coursed sandstone and rendered walls (west and north) with ashlar corner pilasters, tooled stone impost course, plinth and broken-apex pediment to gable front. Round-headed blind niches to entrance front with statues, pedestals, sills, carved block-and-start surrounds and voussoirs. Round-headed water fonts to entrance front with block-and-start surrounds and voussoirs. Slate hanging to south elevation. Round-headed openings to nave and transepts having lead fixed pane and casement stained glass windows with tooled stone sills and recessed ashlar surrounds. Round-headed opening to north elevation having tripartite sixteen-over-sixteen timber sliding sash window with flanking four-over-four timber sliding sash windows with fanlight, concrete sill and recessed ashlar surround. Square-headed openings to later two-storey addition having fifteen-over-fifteen timber sliding sash windows and stone sills. Oeul-de-beouf openings to sacristy with lead stained glass windows and ashlar stone surrounds. Camber and square-headed door openings with double-leaf timber panelled door (north) and single timber battened doors to secondary entrances. Round-headed door opening to sacristy with double-leaf timber battened door and carved limestone surround. Barrel roof to interior with foliate decoration and dentilated internal eaves course. White marble reredos and altar with pilasters. Carved timber organ gallery to north. Stone stepped approach (north) with stone gate piers and cast-iron gates.

20834031	499928 548322	Pair of attached two-bay two-storey houses, built c.1820. Recent lean-to extension (south-east). Pitched artificial slate roof, rendered chimney stacks and uPVC rainwater goods. Painted rendered walls. Square-headed openings with two-over-two timber sliding sash windows and concrete sills. Square-headed door openings with replacement timber glazed doors. Concrete yard to front (north-east).
20834032	499990 548301	Wall-mounted cast-iron post box, c.1905, with Edward VII crown and royal insignia. Rectangular aperture and display panel. Set in entrance sweep walls.
20834033	500056 548403	Detached seven-bay two-storey convent with breakfront end bays and projecting gabled porch, built 1862, having ten-bay side elevation to west and four-bay side elevation to east. Various single-storey extensions to rear (north) and east. Pitched and hipped slate roofs with bracketed limestone cornice and ashlar limestone chimneystacks. Pitched slate roof to porch with cross finial and corbels. Cast-iron and uPVC rainwater goods. Painted snecked stone walls with ashlar limestone string courses and quoins. Limestone buttresses to porch. Rubble stone walls to rear elevation (north). Round-headed openings with limestone sills and block-and-start surrounds, having hood mouldings to ground floor, set in single arrangement to central block, in triples to ground floor and in pairs to first floor, flanking blocks. Round-headed timber sliding sash windows to ground floor openings, replacement casement windows to first floor openings. Round-headed door opening having limestone surround, comprising engaged Doric columns flanking pair of timber battened doors with wrought-iron strap hinges, having ashlar archivolt and hood moulding above, approached by limestone steps. Located within extensive grounds, terraced to south and stone flight of steps to south of convent.
20834034	499775 548345	Detached Modernist style irregular-plan double-height library, built c.1975. Flat shuttered concrete chamfered overhanging roof. Painted shuttered concrete walls with signage panels. Square-headed openings with uPVC fixed pane windows. Bow-fronted opening with fixed pane windows. Square-headed door opening with uPVC door and overlight. Concrete flagged courtyard enclosed by water and coursed rubble stone walls. Accessed by flight of steps and railings (north-west) and concrete bridge (west).
20834035	499758 548384	Semi-detached three-bay two-storey house, built c.1900. Now in use as surgery and house. Hipped slate roof with overhanging eaves, rendered chimneystack and cast-iron rainwater goods. Painted lined-and-ruled rendered walls with render corbelled eaves course, render string course, quoins and first floor sill course. Round-headed

		openings with one-over-one timber sliding sash windows, moulded render archivolt, keystones and continuous impost course. Round-headed door opening with moulded render archivolt, keystones and continuous impost course adjoining window impost course, having replacement fanlight and timber panelled door. Rendered boundary wall with decorative wrought and cast-iron railings and pedestrian gate to site.
20834036	499745 548390	Semi-detached three-bay two-storey commercial premises, built c.1900, with single-storey flat-roofed extension to north elevation. Hipped slate roof with metal finials to hips and having overhanging eaves, rendered chimneystacks and cast-iron rainwater goods. Painted rendered walls, lined to ground floor, with render corbelled eaves course, render quoins and first floor sill course. Paired round-headed openings to first floor with moulded render archivolt, keystones and continuous impost course, having one-over-one timber sliding sash windows. Round-headed openings to ground floor having timber casement windows below carved timber fixed framed fanlights. Render surrounds incorporating panel with scroll motifs below rendered sill and having pilasters supporting moulded segmental-headed pediment with projecting keystone. Recent square-headed door opening to extension with timber panelled door.
20834037	499763 548447	Terraced single-bay three-storey retail outlet, built c.1920, with shopfront to ground floor. Pitched artificial slate roof with rooflights, moulded render parapet and cast-iron rainwater goods. Painted smooth rendered walls with moulded render string course and sill course to second floor. Square-headed openings having timber fixed pane display window to second floor and replacement timber framed casement windows to first floor flanked by moulded render fluted pilasters. Render shopfront comprising fluted pilasters supporting pedimented brackets and dentilated fascia board with raised lettering. Square-headed opening with timber fixed pane display window. Square-headed door opening with timber framed glazed door and overlight.
20834038	499785 548456	Terraced three-bay three-storey house, built c.1850, with shopfront to ground floor. Now in use as house and office. Pitched artificial slate roof with rooflights, rendered chimneystack and cast-iron rainwater goods. Painted smooth rendered walls with decorative render band separating first and second floors. Square-headed openings with two-over-two timber sliding sash windows to second floor, one-over-one timber sliding sash windows to first floor, painted rendered sills and moulded render surround. Timber shopfront comprising pilasters with capitals supporting architrave, fascia board and cornice. Square-headed openings with timber fixed pane display

		windows and replacement uPVC windows. Central square-headed door opening with overlight and double-leaf timber panelled doors. Round-headed door opening to east bay of ground floor, giving access to upper floors, with carved timber panelled door, overlight and moulded render archivolt.
20834039	499803 548466	Terraced two-bay three-storey house, built c.1880, with disused shopfront to ground floor. Pitched roof with moulded render parapet and rendered chimneystack. Painted smooth rendered walls. Square-headed openings with one-over-one timber sliding sash windows and painted stone sills. Shopfront comprising timber fascia board over square-headed openings with timber fixed pane display window and square-headed door opening with timber panelled door and overlight.
20834040	499828 548447	Corner-sited semi-detached single-bay two-storey house with half dormers, built c.1890, having shopfront inserted to ground floor and single-storey flat-roofed extension to rear (south-west). Pitched artificial slate roof with rendered chimneystacks, uPVC rainwater goods and timber panelling to dormer tympanum. Square-headed openings with paired timber sliding sash windows having one-over-one pane to half dormers and four-over-four timber sliding sash windows to first floor. Shopfront comprising timber fascia board over square-headed openings having four pane fixed timber framed display window, carved stall riser and timber panelled door with overlight.
20834042	499856 548644	Detached three-bay two-storey house, built c.1900. Single-bay single-storey flat roof extension to rear (south-east). Pitched slate roof with rendered gable chimneystacks and cast-iron and uPVC rainwater goods. Smooth rendered walls with sill course to first floor and having chamfered north-east ground floor corner. Square-headed openings with one-over-one timber sliding sash windows and concrete sills. Square-headed door opening with timber panelled door and overlight. Square-headed door opening to rear with timber glazed door. Concrete block enclosing wall to rear with timber gate.
20834043	499893 548545	Freestanding circular-profile lamp standard, erected c.1900. Now disused. Comprising cast-iron pedestal with decorative moulded banding, fluting, swag motifs and service hatch plate, supporting shaft with arched arm having wrought-iron detailing and lamp cap.
20834044	499825 548573	Pair of semi-detached three-bay two-storey houses, built c.1820. Pitched artificial slate roof with rendered chimneystacks and uPVC rainwater goods. Painted rendered walls with raised render quoins and plinth. Square-headed openings having one-over-

		one timber sliding sash windows with rendered stone sills and raised render block-and-start surrounds. Square-headed door opening having timber panelled door, overlight, concrete step, rendered recessed reveal and block-and-start surround. Some opening fittings replaced.
20834045	499796 548541	Terrace of four two-bay two-storey houses, built c.1900. Pitched artificial slate roofs having red-brick and rendered chimneystacks with cast-iron and uPVC rainwater goods. Painted rendered walls. Square-headed openings having two-over-two timber sliding sash windows with concrete and stone sills. Square-headed door openings with timber glazed doors and overlights. Some opening fittings now replaced.
20834046	499749 548520	Attached three-bay two-storey house, built c.1900. Pitched artificial slate roof with rendered chimneystack and uPVC rainwater goods. Painted rendered walls with sill course to first floor and rusticated quoins. Square-headed openings with one-over-one timber sliding sash windows, tooled limestone sills and rusticated block-and-start surrounds. Square-headed door opening with rusticated block-and-start surround and timber glazed door. Enclosed rendered wall, wrought-iron railings and gate.
20834048	499793 548483	Terraced three-bay three-story house, built c.1860, with shopfront to ground floor, inserted c.1930. Pitched artificial slate roof with rendered chimneystack and uPVC rainwater goods. Square-headed openings with painted stone sills and uPVC windows. Round-headed door opening giving access to upper floors, with timber panelled door, moulded render archivolt and fanlight. Render shopfront, comprising pilasters supporting scroll brackets, glazed painted fascia board with gold leaf lettering and dentilated cornice. Timber fixed pane display window with rendered sill, comprising paired shoulder arch openings with decorative Celtic Revival style knot motifs to spandrels and surmounted by square-headed opening with painted lettering. Square-headed door opening with overlight and replacement double-leaf timber panelled door.
20834049	499747 548458	Cast-iron wall-mounted post box, c.1890, with V.R. insignia and raised crown motif. Rectangular aperture and display panel. Set into wall of commercial premises at corner of Barrack Street and Main Street.
20834050	499682 548449	Terraced three-bay three-storey house, built c.1900, having shopfront to ground floor. Pitched slate roof with rooflights, rendered chimneystacks and cast-iron rainwater goods. Rendered walls. Square-headed openings with rendered sills and uPVC windows. Render shopfront comprising fluted pilasters supporting capitals and fascia board, having square-headed timber fixed pane display window with canted

		pane to recessed square-headed door opening with timber glazed door and overlight. Square-headed door opening to west of shopfront, giving access to upper floors, having timber panelled door with timber framed overlight and sidelights.
20834051	499676 548455	Terraced three-bay three-storey house with dormer attic, built c.1860, having shopfront to ground floor. Pitched artificial slate roof with rooflights, rendered chimneystack and cast-iron and uPVC rainwater goods. Rendered walls with signage incorporating clock. Square-headed openings with six-over-six timber sliding sash windows, rendered sills and painted surrounds. Render shopfront comprising pilasters with recessed panel and roundel, supporting moulded capitals with quatrefoil motif and fascia board. Recent insertion comprising fluted timber pilasters supporting scalloped cut stone window hood. Square-headed openings with timber fixed pane display windows. Recessed square-headed door opening having double-leaf timber glazed doors.
20834052	499666 548464	Terraced ten-bay three-storey former coaching inn, built c.1820, having integral carriage arch to west ground floor bays, shopfronts to ground floor central and east bays and canted oriel windows to upper floors of fifth bay (from east). Later in use as hotel, now in use as commercial outlets and guest house. Pitched slate roof with render parapet, rendered and red brick chimneystacks and uPVC rainwater goods. Render pediment to canted oriel windows. Painted rendered walls with fluted render pilasters grouping bays at uneven intervals. Square-headed openings with one-over-one timber sliding sash windows, rendered sill courses and moulded render surrounds. Square-headed openings with timber casement windows to canted oriels. Ground floor delineated by series of render pilasters with moulded capitals supporting continuous entablature and containing entrance to upper floors and shopfronts between pilasters. Shopfront to east five bays having square-headed aluminium fixed pane display window and door. Shopfront to west having square-headed timber fixed pane display window and timber glazed door. Square-headed opening below oriel windows, giving access to upper floors and having double-leaf timber glazed doors.
20834053	499651 548475	Terraced three-bay three-storey house with dormer attic, built c.1870, having shopfront to ground floor. Pitched artificial slate roof with rendered chimneystack and cast-iron and uPVC rainwater goods. Rendered walls with timber panelling to dormers. Square-headed openings with four-over-four timber sliding sash windows and rendered sills and surrounds. Square-headed openings having timber casement

		windows to dormers. Render shopfront comprising pilasters with recessed panels supporting moulded capitals with quatrefoil motif and recent timber fascia board. Square-headed opening with twin camber-headed openings with timber fixed pane display windows. Recessed square-headed door opening with timber glazed door.
20834054	499645 548478	Terraced two-bay three-storey house with dormer attic, built c.1870, having shopfront to ground floor. Pitched artificial slate roof with rendered chimneystack and uPVC rainwater goods. Rendered walls with timber panelling to dormers. Square-headed openings having rendered sills and surrounds with uPVC windows. Render shopfront comprising pilaster with recessed panel and roundel, supporting moulded capitals with quatrefoil motif and moulded cornice. Recent brick infill shopfront with timber fascia board, square-headed timber casement display window and double-leaf timber glazed doors.
20834055	499641 548481	Terraced two-bay three-storey house with dormer attic, built c.1870, having shopfront to ground floor. Pitched artificial slate roof with rendered chimneystack and uPVC rainwater goods. Rendered walls with moulded render quoins and artificial slate hanging to dormers. Square-headed openings having rendered sills and surrounds with uPVC windows. Render shopfront comprising pilaster with recessed panel and roundel, supporting moulded capitals with quatrefoil motif and moulded cornice. Recent infill shopfront comprising uPVC fascia board, round-headed timber casement display windows and timber glazed door.
20834056	499615 548496	End-of-terrace three-bay two-storey house with dormer attic, built c.1910, having shopfront to ground floor. Hipped slate roof having decorative clay ridge tiles, finials, shared rendered chimneystack and cast-iron rainwater goods. Pitched slate roof to dormer with decorative clay ridge tiles and carved timber bargeboards. Painted rendered walls. Square-headed openings with one-over-one timber sliding sash windows and moulded render surrounds. Square-headed opening to dormer with paired one-over-one timber sliding sash window, moulded rendered surround and render sill. Timber shopfront comprising fluted pilasters with scroll capitals adorned in foliage and fruit motifs, replacement fascia board and square-headed window opening with arcaded fixed pane display windows. Square-headed door openings with timber panelled doors and overlight.
20834058	499585 548532	Attached three-bay two-storey Classical style former courthouse with central pedimented breakfront bay, built c.1830. Now in use as commercial premises and offices. Pitched artificial slate and flat roofs having concealed rainwater goods. Ashlar

		limestone walls with pediment to central breakfront bay, pilasters flanking central window, memorial plaques, string course and cornice. Venetian window with timber fixed pane windows and carved limestone dressings. Square-headed door openings having consoles supporting tooled limestone pediments and replacement double-leaf timber panelled doors.
20834059	499618 548525	Terraced three-bay two-storey house with dormer attic, built c.1920. Pitched artificial slate roof with rendered chimneystack, rooflight and uPVC rainwater goods. Painted rendered walls with render corbelled eaves course and sill course. Square-headed openings with one-over-one timber sliding sash windows and concrete sills. Square-headed door opening with timber panelled door, timber glazed side panels and overlight.
20834060	499649 548518	Terraced three-bay two-storey house with dormer attic, built c.1860. Pitched artificial slate roof with rendered chimneystack, rooflight and uPVC rainwater goods. Painted lined-and-ruled rendered walls. Square-headed openings with six-over-six timber sliding sash windows, painted and rendered stone sills and cast-iron sill guards (ground floor). Square-headed door opening with timber panelled door and overlight.
20834061	499681 548518	Terraced three-bay two-storey house with dormer attic, built c.1860. Pitched slate roof with rendered chimneystack, rooflight and uPVC rainwater goods. Lined-and-ruled rendered walls with eaves course. Square-headed openings with six-over-six timber sliding sash windows, painted stone sills and recent wrought-iron sill guards (ground floor). Square-headed door opening having replacement timber panelled door and overlight.
20834062	499689 548518	Terraced three-bay two-storey house with dormer attic, built c.1860, currently disused. Pitched slate roof with rendered chimneystack, eaves course and uPVC rainwater goods. Square-headed openings having six-over-six timber sliding sash windows with stone and concrete sills. Square-headed door opening with recessed timber panelled door, overlight and architrave surround.
20834063	499730 548485	End-of-terrace four-bay three-storey former house, built c.1860, having shopfront to ground floor. Now in use as office. Later single-storey flat roof extension to rear (west). Hipped slate roof with shared rendered chimneystack and uPVC rainwater goods. Painted lined-and-ruled walls (east) with render sill course (first and second floor). Rubble stone walls (north) and rendered walls (west). Square-headed openings with one-over-one timber sliding sash windows and concrete sills. Tripartite opening to later extension having one-over-one timber sliding sash windows. Render

		shopfront comprising fluted square pilasters supporting architrave, fascia board and cornice. Square-headed opening having timber fixed pane window and concrete sill. Square-headed door opening having replacement timber panelled door and overlight.
20834064	499734 548476	Terraced three-bay three-storey house, built c.1860, now also in use as public house. Altered to ground floor and camber-headed shopfront inserted with single-pitched roof above. Later extension to rear. Pitched slate roof with rendered chimneystack and uPVC rainwater goods. Painted lined-and-ruled rendered walls with wrought-iron signage fixings. Square-headed openings having one-over-one timber sliding sash windows, stone sills with decorative cast-iron sill guards and moulded render consoles (second floor). Camber-headed ground floor opening having timber fixed pane display windows with concrete sill. Round-headed door openings flanking central window opening having timber battened doors with cast-iron hinges and lion's head fixings.
20834065	499699 548408	Attached two-bay three-storey house with dormer attic, built c.1900. Pitched artificial slate roof with rendered chimneystacks, decorative clay chimneypots and cast-iron rainwater goods. Pitched artificial slate roof to dormers. Painted smooth rendered walls to first floor and rustic rendered walls to ground floor, separated by moulded rendered platband with painted lettering. Rusticated plinth to ground floor. Slate hanging and timber panelled tympanum with consoles to dormers. Square-headed openings with two-over-two timber sliding sash windows, cast-iron sill guards (ground floor) and concrete sills. Square-headed openings to dormers with uPVC windows. Square-headed door opening with timber panelled door and overlight.
20834066	499695 548412	Corner-sited attached three-bay two-storey house with dormer attic, built c.1900, having chamfered carriage corner and shopfront inserted c. 1930 to ground floor. Two-storey pitched roof extension to rear (south-west). Hipped artificial slate roof with rooflights, rendered chimneystack and cast-iron rainwater goods. Painted smooth rendered walls to first floor. Square-headed openings with rendered sills and uPVC windows. Black bakelite shopfront to north-east and north-west elevations with incised lettering and stepped parapet over chamfered corner doorway. Square-headed openings with aluminium fixed pane display windows. Recessed square-headed door opening having aluminium glazed door with diagonal timber and tubular steel handle.
20834067	499661 548398	Terraced three-bay two-storey house, built c.1840, with shopfront to ground floor. Pitched artificial slate roof with rooflights, rendered chimneystack and uPVC

		rainwater goods. Painted smooth rendered walls. Square-headed openings with one-over-one timber sliding sash windows and rendered sills. Shopfront comprising multiple-pane timber fixed framed display windows flanking timber glazed door. Square-headed door opening with timber panelled door giving access to upper floor.
20834068	499674 548435	Terraced two-bay three-storey house with dormer attic, built c.1840, having shopfront to ground floor. Pitched artificial slate roof with overhanging eaves, rooflights, rendered chimneystack and uPVC rainwater goods. Painted rendered walls. Square-headed openings with diminishing one-over-one timber sliding sash windows and rendered sills. Carved timber shopfront comprising pilasters supporting fascia board and cornice. Square-headed timber fixed pane display window and square-headed door opening with timber glazed door.
20834069	499671 548438	Terraced two-bay three-storey house, built c.1840, having shopfront to ground floor. Pitched artificial slate roof with overhanging eaves, rooflights, rendered chimneystack and uPVC rainwater goods. Painted rendered walls. Square-headed openings with diminishing one-over-one timber sliding sash windows and rendered sills. Timber shopfront comprising fascia board, square-headed openings with timber fixed pane display window and flanking square-headed door openings having timber glazed doors.
20834070	499664 548443	Terraced two-bay three-storey house, built c.1850, having shopfront to ground floor. Now also in use as public house. Pitched roof having rendered chimneystack with cast-iron and uPVC rainwater goods. Painted rendered walls with rendered plinth. Camber-headed openings with diminishing six-over-six timber sliding sash windows and rendered sills. Carved timber shopfront comprising pilasters with recessed panel supporting scroll capitals, fascia board and dentilated cornice. Square-headed timber fixed pane display window. Square-headed door opening with timber panelled door, carved timber surround and tripartite overlight. Cobblestones to rear (south-west).
20834071	499618 548463	Attached two-bay three-storey house, built c.1880, with shopfront to ground floor. Now in use as store. Pitched roof with rendered parapet, rendered chimneystack and cast-iron rainwater goods. Painted smooth rendered walls. Camber-headed openings with one-over-one timber sliding sash windows, painted moulded brick surrounds and rendered sills (second floor). Timber shopfront comprising fluted pilasters and capitals supporting fluted brackets with floral motif and ball finials, having fascia board with moulded cornice. Square-headed openings with uPVC display window. Recessed square-headed door opening with replacement overlight and timber door.

20834072	499607 548468	Attached eight-bay three-storey former hotel with canted oriel windows (north-west), built c.1870, with pub front and shopfront to ground floor. Recent canted porch to front (north-east) and various two-storey extensions to rear (south-west). Pitched slate roof having rendered parapet, rendered chimneystacks and cast-iron rainwater goods. Painted rendered walls with blind render panels (second floor), moulded render cornice below parapet and render platband between first and second floors having raised timber lettering and anchor motifs. Square-headed openings with diminishing one-over-one and two-over-two (ground floor) timber sliding sash windows with painted stone sills and rendered surrounds. Wrought-iron sill guards to ground floor. Carved timber pub front to west end of front (north-east) elevation comprising pilasters supporting fluted bracket capitals with pediments, fascia board and dentilated cornice. Square-headed opening with timber fixed pane display window. Square-headed door opening with timber panelled door and overlight. Replacement shopfront to east end of front elevation comprising timber fixed pane display window with plastic fascia board. Square-headed door opening to porch with timber glazed door and sidelights.
20834073	499881 548723	Terraced three-bay two-storey house, built c.1880. Pitched slate roof having red brick chimneystack and cast-iron and uPVC rainwater goods. Painted rendered walls. Square-headed openings with one-over-one timber sliding sash windows and concrete sills. Square-headed door opening having replacement timber panelled door and overlight.
20834074	499877 548715	Terraced three-bay two-storey former house, built c.1880, now in use as a store. Pitched slate roof having ceramic ridge tiles, red brick chimneystack with cast-iron and uPVC rainwater goods. Painted rendered walls. Square-headed openings with two-over-two timber sliding sash windows and concrete sills (first floor). Square-headed door opening with double-leaf timber battened sliding door.
20834075	499869 548702	Terraced three-bay two-storey house, built c.1870. Pitched artificial slate roof with shared rendered chimneystack and uPVC rainwater goods. Painted rendered walls. Square-headed openings with one-over-one timber sliding sash windows and concrete sills. Square-headed door opening having replacement timber glazed door.
20834077	499663 548531	Terrace three-bay two-storey house with dormer attic, built c.1860. Pitched artificial slate roof with rendered chimneystack and uPVC rainwater goods. Flat roof to dormers. Painted rendered walls. Square-headed openings with one-over-one timber sliding sash windows and painted stone sills. Square-headed openings to dormers

		with paired one-over-one timber sliding sash windows. Square-headed door opening with replacement timber glazed door.
20834078	499637 548536	Terraced three-bay two-storey house, built c.1880, later divided and in use as pair of houses, now vacant. Pitched artificial slate roof with rendered chimneystacks, rooflights and cast-iron rainwater goods. Painted rendered walls. Square-headed openings having one-over-one timber sliding sash and timber casement windows, stone and concrete sills and external timber shutters. Square-headed door openings with timber panelled doors and overlights.
20834079	499629 548540	End-of-terrace three-bay two-storey former house, built c.1880, later in use as garage with shopfront to ground floor. Now vacant. Pitched artificial slate roof with rooflights, red brick chimneystacks and uPVC rainwater goods. Painted smooth rendered walls. Rubble stone walls to south-west elevation. Square-headed openings with two-over-two timber sliding sash windows and painted concrete sills with external timber shutters. Render shopfront comprising chamfered pilasters supporting moulded cornice and fascia. Pressure gauge to north-east pilaster. Square-headed door opening having timber double doors.
20834080	499610 548566	Freestanding gable-fronted double-height former Methodist church, built 1866, having gable-fronted porch (west), three-bay nave and single-bay chancel (east). Sold, 1983. Pitched slate roofs having ceramic ridge tiles, render coping and uPVC rainwater goods. Coursed rubble stone walls having sandstone and rubble stone buttresses, string course and sandstone quoins. Paired pointed arch openings to nave having tooled sandstone surrounds and sills with uPVC windows. Tripartite pointed arch openings to west elevation gable with spandrels, sandstone surrounds, sandstone sills and hood moulding with decorative stops. Paired trefoil-headed openings to porch having cast-iron fixed quarry glazing and sandstone block-and-start surrounds. Trefoil-headed opening to chancel with cast-iron fixed quarry glazing and sandstone block-and-start surround. Pointed arch door opening to porch having double-leaf timber battened door with wrought-iron strap hinges, moulded sandstone surround and sandstone hood moulding with squared stops. Square-headed door opening with double-leaf timber battened door. Flight of stone steps and wrought-iron railing to south entrance. Carved timber truss roof to interior. Rubble stone boundary walls to site, having recent railings and gate.
20834081	499582 548599	Freestanding cast-iron water hydrant, erected c.1880, comprising base, fluted shaft, fluted cap and banding. Lions-head motif to north face. Recent tap addition.

20834082	499574 548573	End-of-terrace three-bay three-storey house, built c.1830, with wrought-iron porch addition. Hipped slate roof with rendered chimneystacks and cast-iron rainwater goods. Painted rendered walls with raised render plinth, platband to first floor sill level and sill course to second floor. Square-headed openings having one-over-one timber sliding sash windows with stone sills and cast-iron sill guards (ground floor). Internal timber window shutters. Square-headed door opening having timber panelled door with overlight. Enclosing rubble stone wall to north, having carriage arch with rusticated voussoirs and replacement double-leaf timber battened doors, and square-headed door replacement timber battened door.
20834083	499565 548571	Attached four-bay three-storey former house, built c.1820, now in use as office. Hipped slate roof with rendered chimneystack and uPVC rainwater goods. Exposed rubble stone and rendered walls (ground floor) with quoins. Square-headed openings having one-over-one timber sliding sash windows, stone and concrete sills and cast-iron sill guards (ground floor). Round-headed door opening with timber panelled door, flanked by engaged colonettes and sidelights, with moulded cornice and spoked fanlight above.
20834084	499558 548573	Semi-detached two-bay three-storey former house, built c.1820, now in use as surgery. Hipped slate roof with rendered chimneystack and uPVC rainwater goods. Exposed rubble stone and rendered walls (ground floor) with quoins. Square-headed openings having one-over-one timber sliding sash windows with stone and concrete sills. Square-headed tripartite opening to ground floor with central and flanking one-over-one timber sliding sash windows and cast-iron sill guard. Round-headed door opening with timber panelled door, flanked by engaged colonettes and sidelights, with moulded cornice and spoked fanlight above.
20834085	499535 548582	Attached six-bay two-storey building formerly with three integral carriage arches, built c.1830, now in use as offices. Recent extensions to rear (north). Pitched slate roofs with rooflight, rendered chimneystack and cast-iron rainwater goods. Painted lined-and-ruled rendered walls with render sill course and raised render lettering. Square-headed openings having concrete sills and raised render surrounds with replacement one-over-one timber sliding sash windows (first floor) and two-over-two timber sliding sash windows (ground floor). Square-headed opening to west elevation with tripartite one-over-one timber sliding sash windows and concrete sill. Square-headed door opening with timber panelled door, overlight, raised rendered surround and concrete step. Camber-headed opening to carriage arches with rendered

		keystone and replacement double-leaf timber battened doors. Replacement double-leaf timber glazed doors to central carriage arch with overlight, sidelights and timber side panels.
20834086	499509 548643	Freestanding cast-iron water hydrant, erected c.1880, comprising base, fluted shaft, fluted cap and banding, with lion's head motif to north face. Set on concrete plinth.
20834087	499505 548654	End-of-terrace five-bay two-storey over basement house, built c.1820. Recent porch addition to front (south-west). Hipped artificial slate roof with rendered chimneystacks and uPVC rainwater goods. Painted smooth rendered walls with chamfered east elevation. Square-headed openings with two-over-two timber sliding sash windows and concrete sills. Square-headed door openings with replacement timber panelled doors and overlights. Terraced garden to south-west enclosed by rendered walls and timber gate.
20834088	499403 548676	Detached four-bay single-storey school, dated 1853, comprising two-bay central block with single-bay gable-fronted flanking projecting blocks. Recessed two-bay block to north-west. Extensions to rear (north-west). Pitched slate roofs having carved timber bargeboards, finials to gables, eaves course, rendered chimneystacks with ceramic pots and cast-iron rainwater goods. Roughly dressed stone walls. Square-headed openings having tooled limestone sills and voussoirs, with uPVC windows. Red brick surrounds to north-west elevation openings. Pointed arch door opening to south-east elevation with timber battened door having date plaque above. Rubble stone enclosing wall with cast-iron gate and ashlar piers
20834089	499517 548613	Freestanding double-height Gothic Revival style Church of Ireland church, built 1815, having three-bay nave, three-stage crenulated tower (north-west) and single-bay chancel (south-east). Later three-bay single-storey vestry (north-east). Pitched slate roof with render coping (north-west) and uPVC rainwater goods. Ashlar limestone crenulations and corner pinnacles to tower. Dressed and rubble stone walls with ashlar dressed limestone stepped buttresses and having slate hanging (south-east). Rendered walls to chancel. Ashlar limestone string courses to tower with decorative carved recesses and clock faces (south-west and north-west). Blind oculi and quatrefoil openings with raised stone surrounds to south-west elevation. Pointed arch openings having limestone tracery, lead stained glass windows, dressed stone sills and surrounds with tooled hood mouldings and voussoirs. Pointed arch openings to vestry with cast-iron fixed and casement quarry glazing with concrete sills. Pointed arch openings to tower with timber louvers. Recessed pointed arch door opening to

		north-west with double-leaf timber panelled door, limestone steps, timber fixed pane stained glass window with tracery to tympanum and ashlar limestone surround. Pointed arch door opening to south-west with timber panelled door, timber fixed pane stained glass window with tracery to tympanum and surround comprising decorative stepped buttresses and hood mouldings. Accessed by flight of steps. Pointed arch door opening to vestry with timber battened door. Rubble stone plinth boundary walls with ashlar limestone copings and cast-iron railings.
20834090	500031 548418	Attached four-bay double-height chapel, built 1879, having projecting entrance block to south-west and engaged corner turret, and single-storey projecting aisle to south. Pitched and hipped slate roofs with bands of fish scale slate, ridge tiles, cast-iron rain water goods, and stone and cast-iron finials. Painted snecked stone walls having limestone horizontal banding and quoins, with buttresses to entrance section. Rubble stone walls to rear and east gable having brick string courses and recent render. Limestone niche to west gable having carved statue. Ashlar limestone dressings to windows openings, south and west elevations, and red brick dressings to north elevation openings. Pair round-headed openings with oculi above to nave and east gable, having stained glass windows. Lancet windows to side aisle. Oculi openings to upper level, entrance block. Rose window and shouldered opening to west gable. Round-headed door opening having limestone surround, with engaged columns flanking timber battened doors with wrought-iron strap hinges.
20834091	500058 548428	Attached six-bay three-storey school block, built c.1880. Pitched slate roof with rendered chimneystacks, cast-iron rainwater goods and bracketed eaves course. Rendered walls. Square-headed openings with one-over-one pane timber sliding sash windows and concrete sills.
20834092	500081 548438	Attached multiple-bay two-storey school block, built c.1900. Pitched slate roof with rendered chimneystacks, cast-iron rainwater goods and bracketed eaves course. Rendered walls with string course between floors. Round-headed openings to ground floor, and shouldered openings to first floor, having red brick dressings and two-over-two timber sliding sash windows, set in single, paired and triple arrangements. Square-headed opening having timber battened doors.
20834093	500102 548433	Attached three-bay single-storey school having projecting porch, dated 1905. Pitched slate roof with rendered chimneystack, decorative ridge cresting and bracketed eaves course. Hipped artificial slate roof to porch. Painted lined-and-ruled rendered walls with quoins. Tripartite arrangement to porch, comprising central blind niche and

		basin, flanked by blind square-headed openings and end pilasters, with moulded entablature and name plaque above. Rounded-headed openings set in triple arrangement, having red brick surrounds and two-over-two pane timber sliding sash windows. Square-headed opening having timber battened doors.
--	--	--

Appendix 3: List of sites on the RPS in the vicinity of the proposed works area

RPS No.	Structure	NIAH No.
940	Gate Lodge	20834002
926	Townhouse	20834003
925	Bantry Bay Hotel	
900	Drinagh DIY (Townhouse & Shopfront)	20834004
930	Coen's Pharmacy	20834005
929	House of Crafts (Townhouse & Shopfront)	20834006
936	Mizen Head Clothing and Footware/Bookshop (Townhouse & Shopfronts)	20834012
935	Biggs & Co. Warehouse	20834011
918	The Anchor Tavern (Shopfront & Oriel windows at W end)	20834072
977	The Paper Shop	20834071
917	Ma Murphy's (Townhouse & Shopfront)	20834070
911	Murphy Show Store (Shopfront)	20834066
892	Townhouse	
912	Bank House	20834036
913	Library	20834034
914	Dwelling	
746	St. Finbarr's Catholic Church	20834030
2980	Post box - Wall mounted cast iron	20834032
1295	Convent of Mercy	20834033
908	Old Market House (Arch)	
907	Veterinary Clinic (Shopfront)	20834048
909	Social Welfare Offices	20834038
906	McCarthy Sports Shop	
2981	Post box - wall mounted cast iron	20834049
910	Webb Casuals (Shopfront & Townhouse)	
905	Hurley Bros. Motor Garage (Shopfront)	
904	Local link Cork	20834063
924	Townhouse & Shopfront	
923	Townhouse	20834061
921	Blue Townhouse	
922	Townhouse	20834060
931	Paddy Power Townhouse	20834056
932	Quill's (Townhouse & Shopfront)	
933	Quill's (Townhouse & Shopfront)	
934	Connections Electrical (Townhouse & Shopfront)	

901	Court House (now Tourist info Office)	20834058
902	Former Methodist Church (Marino Medical Centre)	20834080
903	Old Railway Bridge	
928	Dwelling	20834082
927	Townhouse	20834083
899	Warehouse (Biggs & Co)	20834085
898	St.Brendan's Church of Ireland Church	20834089
893	Former Cinema	
897	Former School	20834090

Appendix 4: List of previous excavations in the vicinity of the works area

License Number	Licence Holder	ITM	Description
08E0274	Margret McCarthy	499827, 548602	Monitoring was carried out in Bantry during works on upgrading the existing water and sewerage supply to the town. The overall project involved the construction of a wastewater treatment facility in Beach town land on elevated ground at the east side of the town, the upgrading of the pumping stations located adjacent to Wolfe Tone Square and the construction of approximately 3km of pipework from the town through existing streets, along the foreshore, parallel to the airstrip and along a further short stretch of public road before reaching the treatment works site. The foreshore section of the works was divided into two sections: the installation of a rising main and the laying of an outfall pipe perpendicular to the shoreline. The rising main was laid at low tide by land-based machinery and the writer oversaw this stage of the works. The National Monuments Service, DoEHLG, requested that a suitably qualified marine archaeologist should monitor dredging associated with the laying of the outfall pipe and this work was carried out under licence by the Moore Group, Galway.
18E0544	Avril Purcell	499757, 548460	Monitoring of water-mains rehabilitation works was carried out on Main Street and Barrack Street in Bantry town center. Modern services and a random rubble culvert were exposed. No features or finds of archaeological significance were revealed.
03E0367	Colm Moloney	499492, 548438	Testing was undertaken at Blackrock Road, Bantry, Co. Cork, to determine the archaeological potential of a proposed single dwelling and garage. Two trenches were excavated. No deposits pre-dating the 19th century were identified.
12D004, 12R015	Niall Brady		Assessment for the Bantry Harbour Development Project included field survey, marine geophysical survey, intertidal and underwater inspection within Bantry harbour and

			extending north to the Cove and Bécín Strand, and west to Abbey Strand. A sequence of three known but previously unrecorded stone-built slipways integrated within the construction of the south quay in Bantry were highlighted.
07D29, 07R133	Avril Purcell, Sheila Lane & Associates	499026, 548517	An intertidal survey and metal-detector survey were carried out on the foreshore on the southern side of Bantry Harbour. No features or finds of archaeological significance were revealed in the trenches.
16E0652	Julianna O'Donoghue	498942, 548553	Monitoring took place of dredging works associated with Bantry Inner Harbour Development. Twenty timbers and an anchor chain were recovered during the dredging operations. The timber assemblage included at least three frames, six planks, a sternpost, two internal structural elements and eight amorphous pieces. Most of the recovered timbers were poorly preserved and/or extensively damaged by the wood-boring mollusc <i>Teredo navalis</i> and gribble. While several of the timbers were identified as <i>Quercus</i> sp., none were suitable for dendro-dating. Some timbers are very similar and may have formed part of the same vessel. There were no intact, or coherent sections of vessels and the entire assemblage may represent several separate wooden vessels. Given the history of activity at Bantry Harbour the recovery of isolated timbers from the marine sediment is not unexpected. Their deposition may have resulted from a wrecking event, the deterioration of laid-up vessels, or being discarded during boat repairs.

